

SAW Filter 654 MHz

MODEL NO.: TA2682A

REV. NO.:1

A. MAXIMUM RATING:

1. Input Power Level: 20 dB_m(CW for 70000hrs at 25°C)
2. DC voltage: 5 V
3. Operating Temperature: -40°C to +105°C
4. Storage Temperature: -40°C to +105°C
5. Moisture Sensitivity Level: Level 1(**MSL1**)

RoHS Compliant
Lead-free soldering

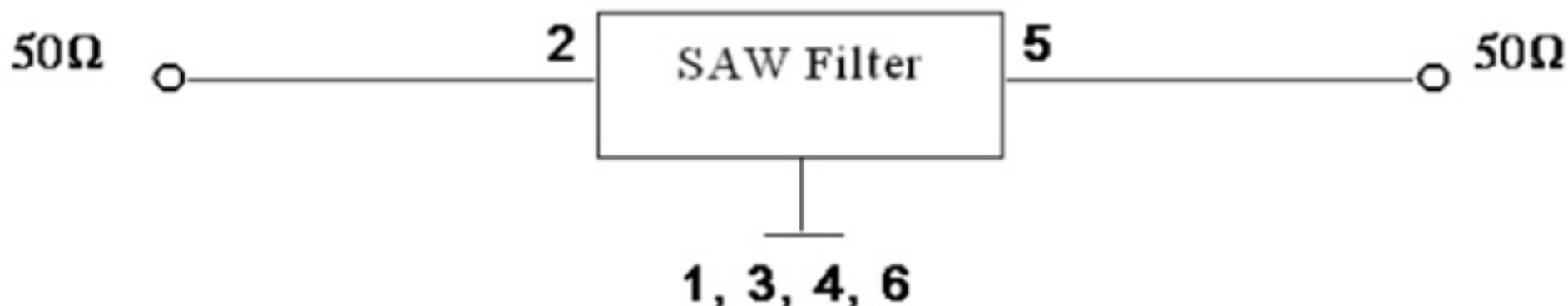
Electrostatic Sensitive Device (**ESD**)

B. ELECTRICAL CHARACTERISTICS:

Item	Unit	min	type	Max	
Center Frequency F_c	MHz		654		
Insertion Loss 638~670MHz (0°C to +50°C)	dB		2.6	3.5	
Insertion Loss 638~670MHz (-40°C to +105°C)	dB		2.6	5.0	
Return Loss 638~670MHz (0°C to +50°C)	dB	12	14		
Pass band 638~670MHz	MHz	32	40		
Attenuation (Reference level from 0dB)					
10~430 MHz	dB	50	55		
430~580 MHz	dB	45	51		
740~1100 MHz	dB	42	45		
1100~1250 MHz	dB	42	45		
Temperature Coefficient of Frequency	ppm/°C	-75 typ			

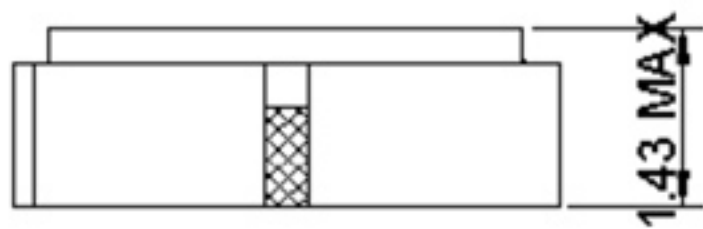
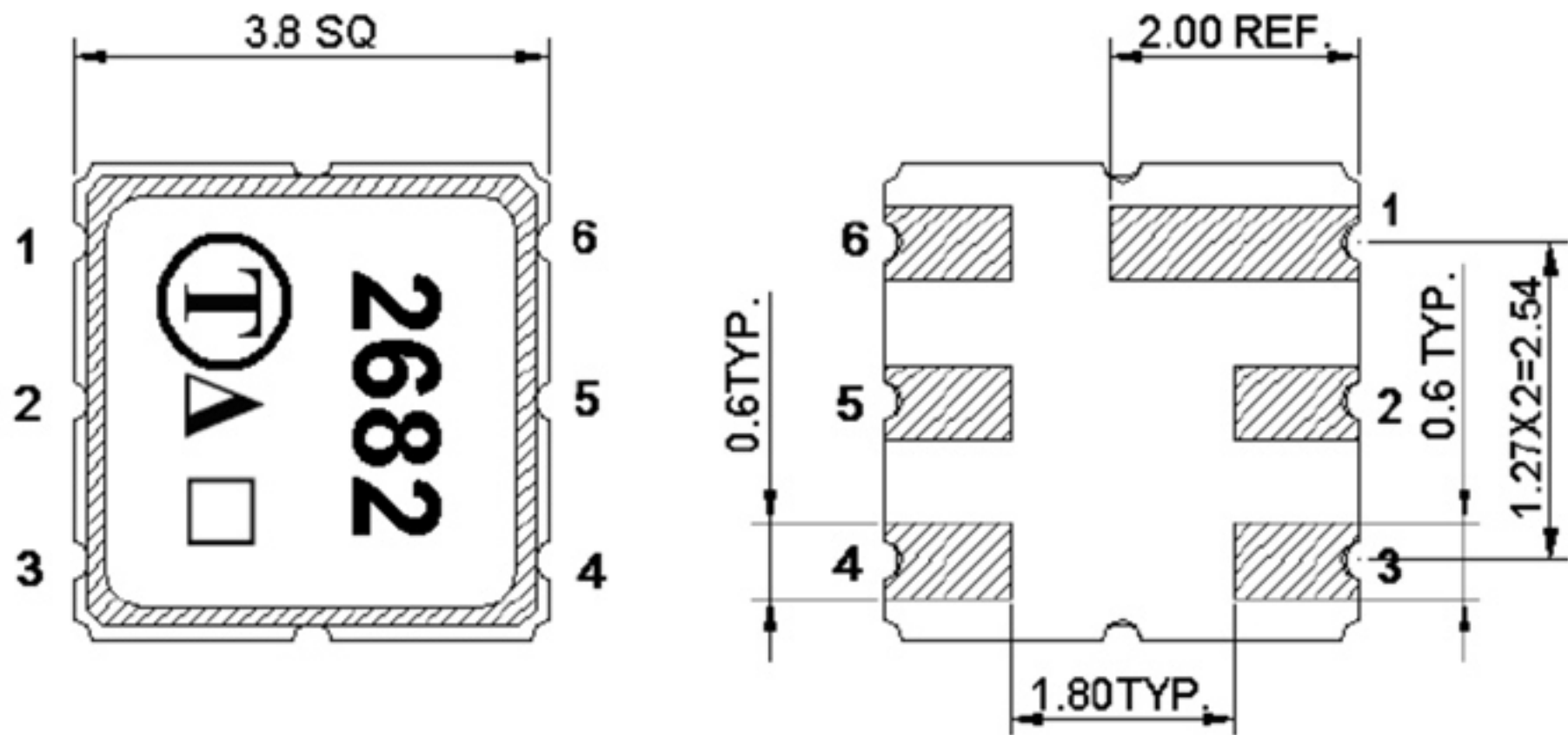
C. MEASUREMENT CIRCUIT:

HP Network analyzer



D. OUTLINE DRAWING:

New



Product Year Code

Year	2009 2013	2010 2014	2011 2015	2012 2016
Product Code	A	a	A	a

Unit: mm

△: Year Code

□: Date Code

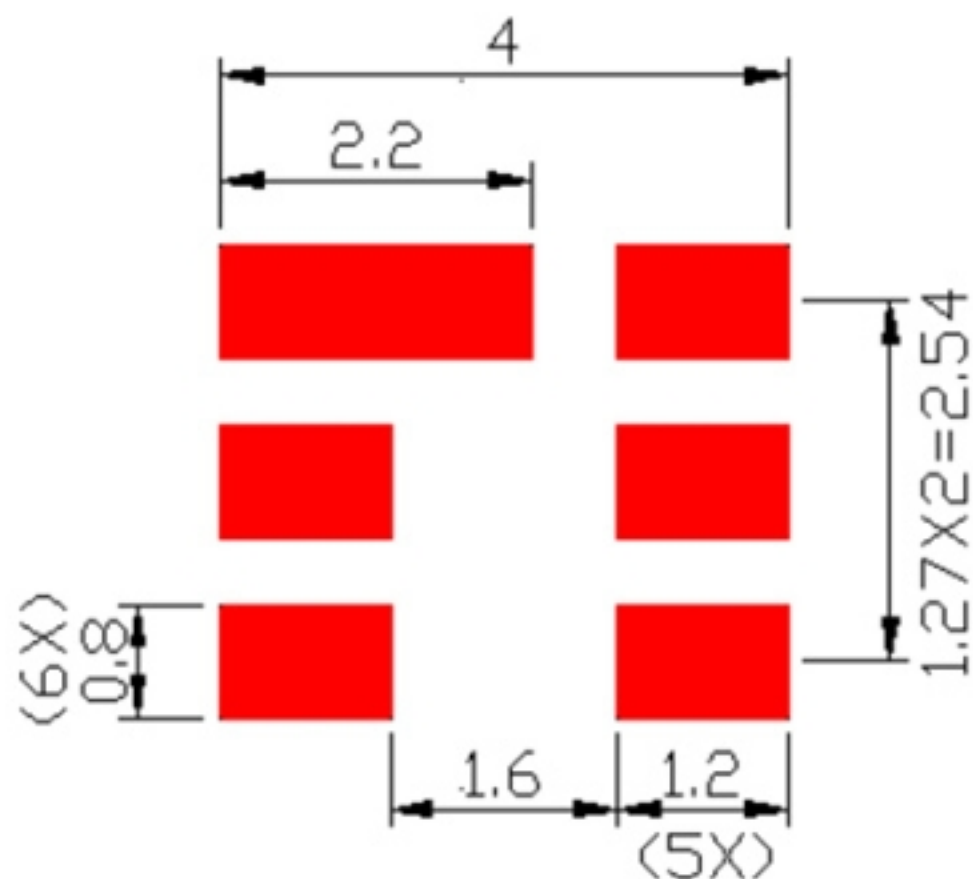
Date Code Table:

Input: 2

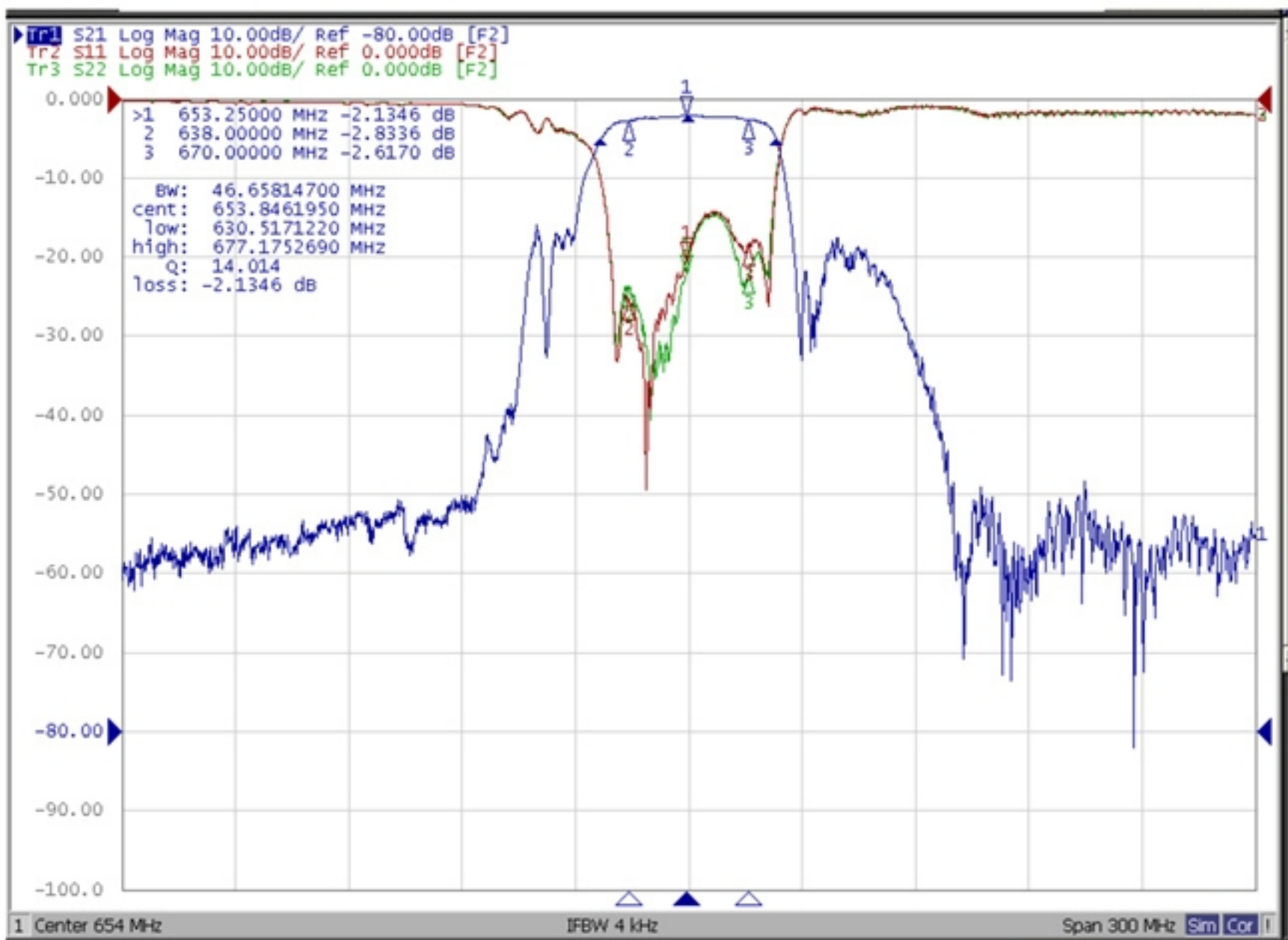
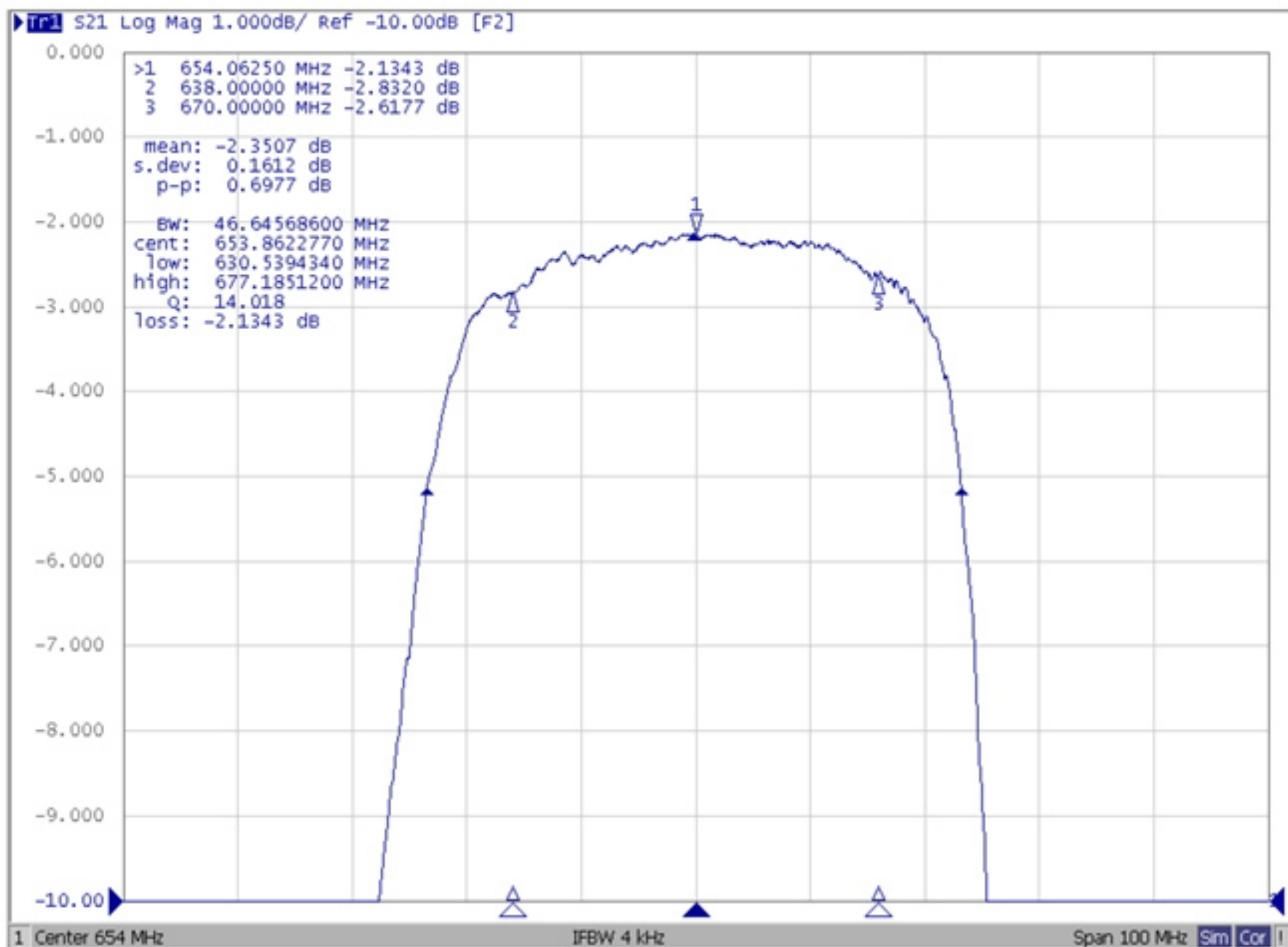
Output: 5

Ground: 1, 3, 4, 6

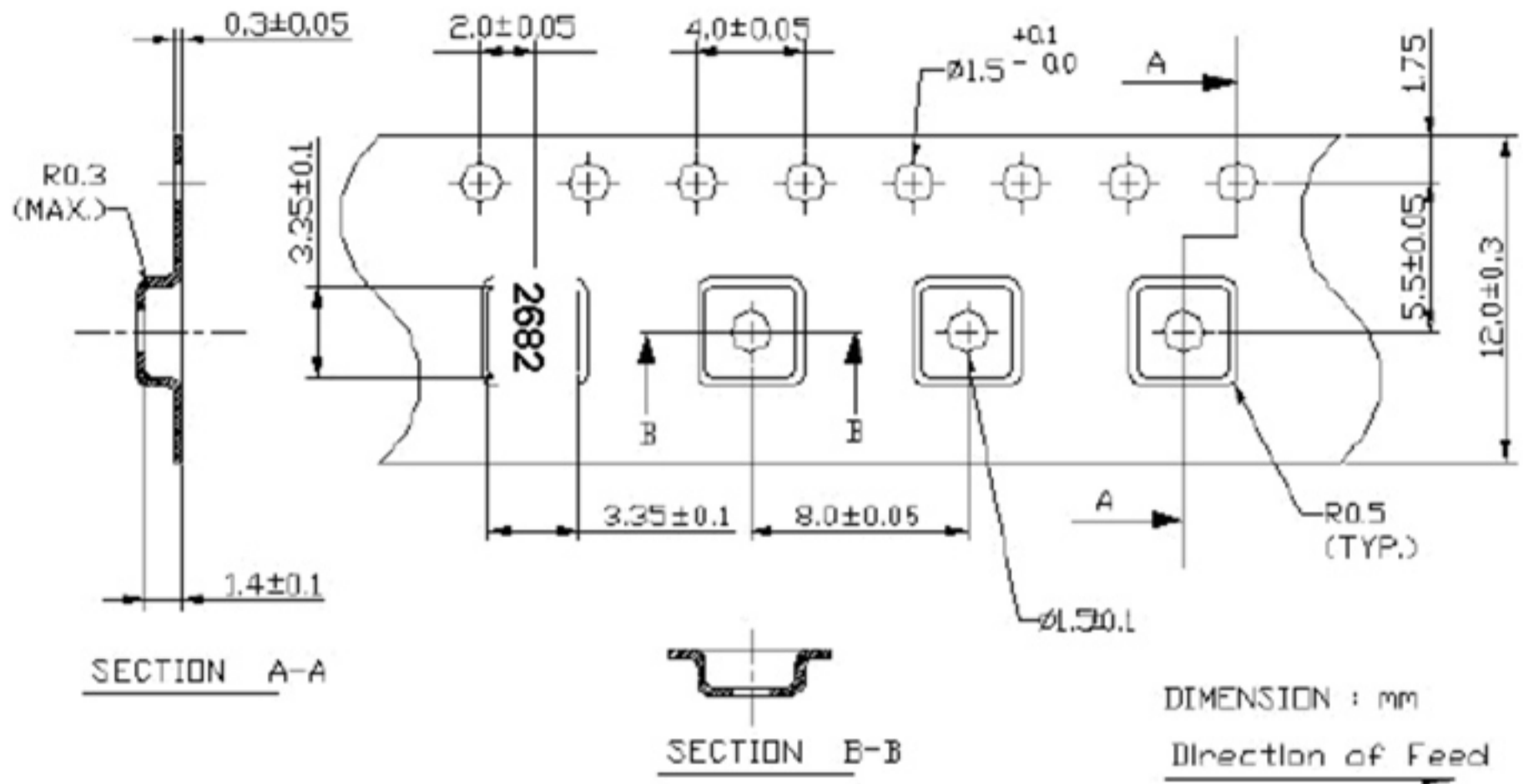
E. PCB Footprint:



F. Frequency Characteristics:



2. TAPE DIMENSION



H. Recommended Reflow Profile:

1. Preheating shall be fixed at 150~180°C for 60~90 seconds.
2. Ascending time to preheating temperature 150°C shall be 30 seconds min.
3. Heating shall be fixed at 220°C for 50~80 seconds and at 260°C +0/-5°C peak (20~40sec).
4. Time: 2 times.

