

SAW Filter 809 MHz

MODEL NO.:TA1558A

REV. NO.:2.0

A. MAXIMUM RATING:

1. Input Power Level: 20 dBm
2. DC Voltage : 3 V
3. Operating Temperature: -30 °C to +85 °C
4. Storage Temperature: -40 °C to +85 °C
5. Moisture Sensitive Level: Level 1 (MSL1)

RoHS Compliant
Lead-free soldering

Electrostatic Sensitive Device (ESD)

B. ELECTRICAL CHARACTERISTICS:

Item	Unit	Min.	Typ.	Max.	
Center Frequency	Fc	MHz	-	809	-
Max. Insertion Loss (794 ~ 824 MHz)	IL	dB	-	2.9	4.5
Passband Ripple (794 ~ 824 MHz)		dB	-	1.4	3.0
Source Impedance (single ended)	Ω	-	50	-	
Load Impedance (single ended)	Ω	-	50	-	
Attenuation					
D.C ~ 758 MHz	dB	45	48	-	
758 ~ 768 MHz	dB	35	48	-	
850 ~ 880 MHz	dB	30	37	-	
880 ~ 1300 MHz	dB	45	48	-	
Package size	mm	SMD 3.8x3.8			

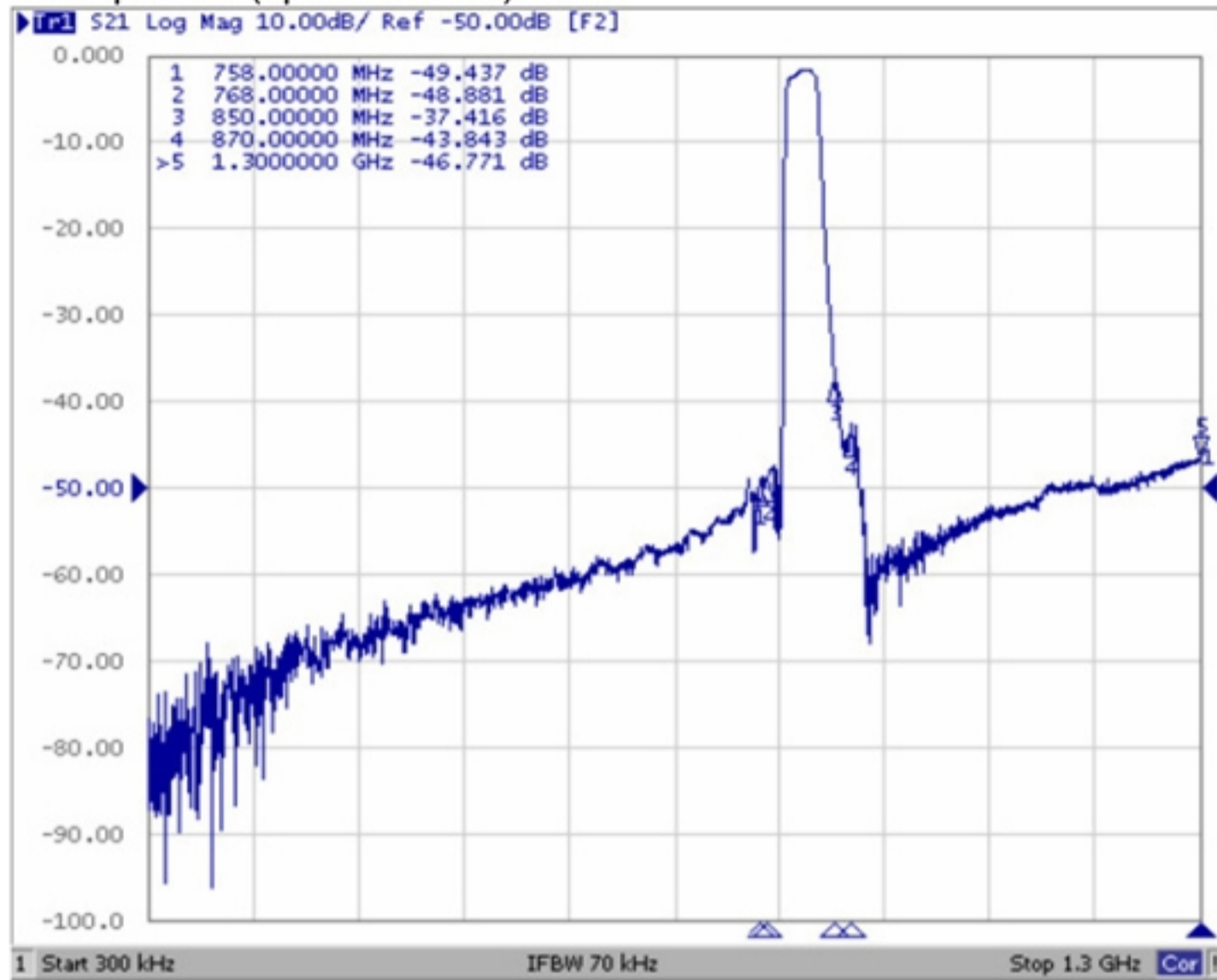
C. MEASUREMENT CIRCUIT:

HP Network analyzer



D. FREQUENCY CHARACTERISTIC:

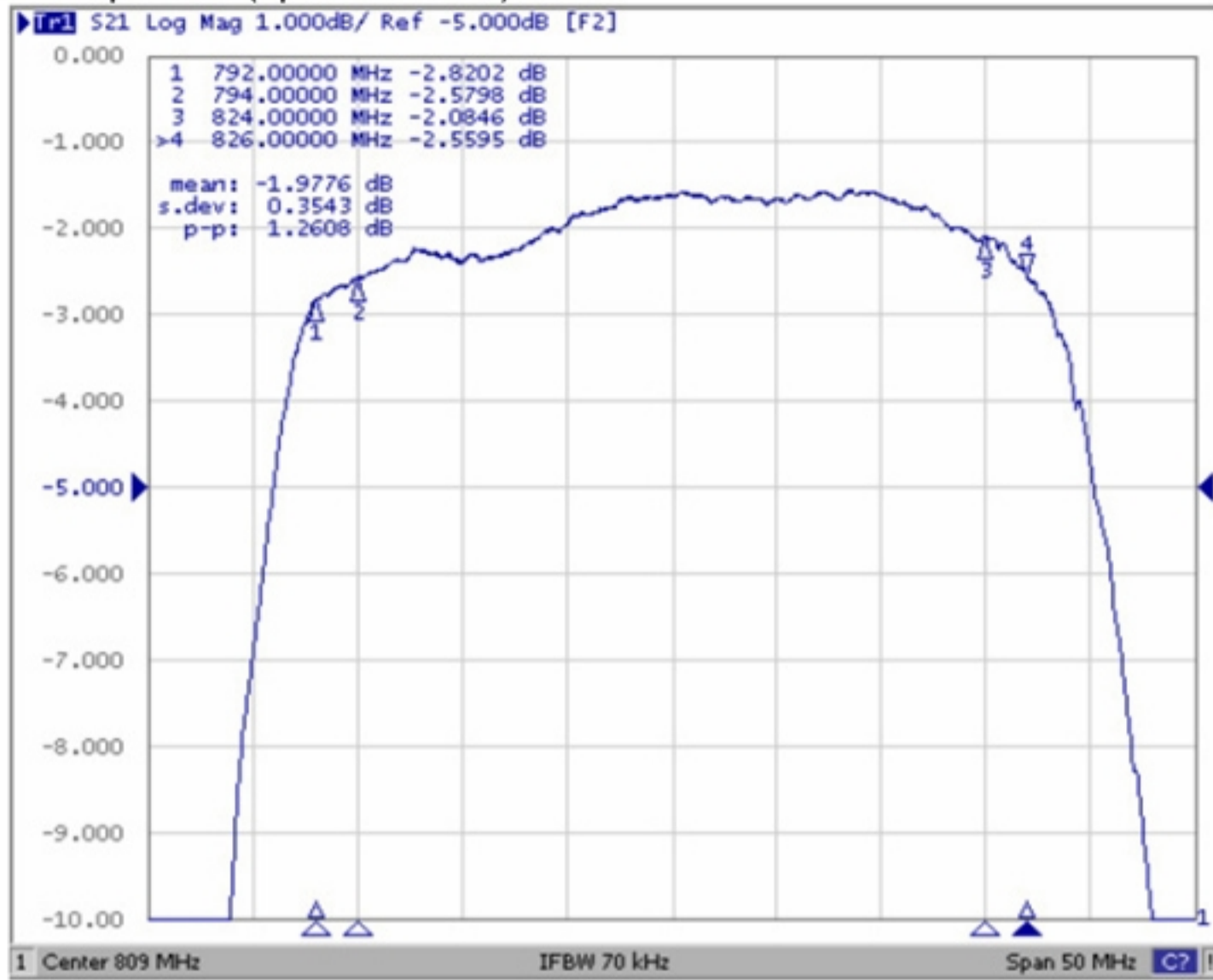
(1) Wide band Response: (span 1.3GHz)



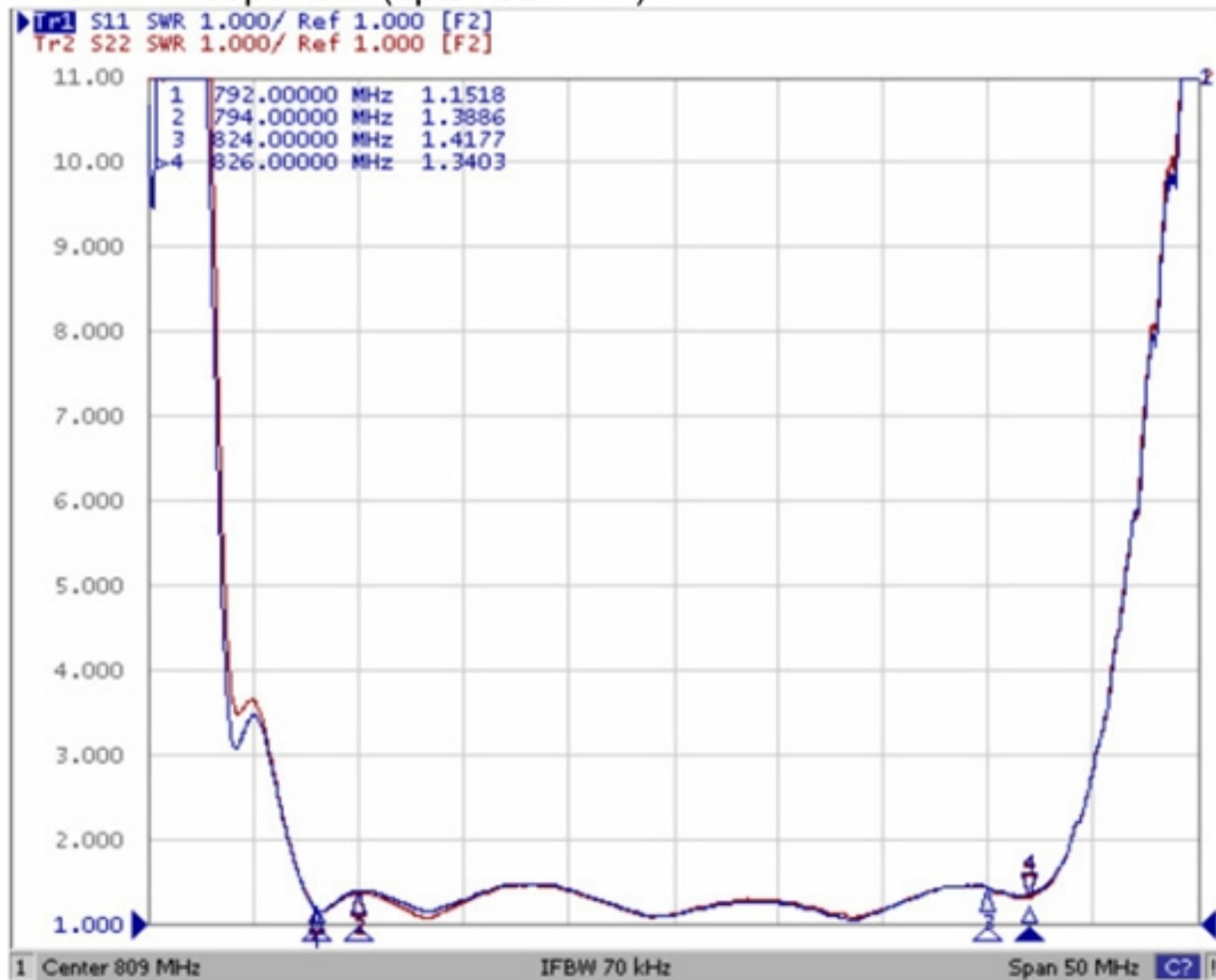
(2) Pass band Response: (span 200 MHz)



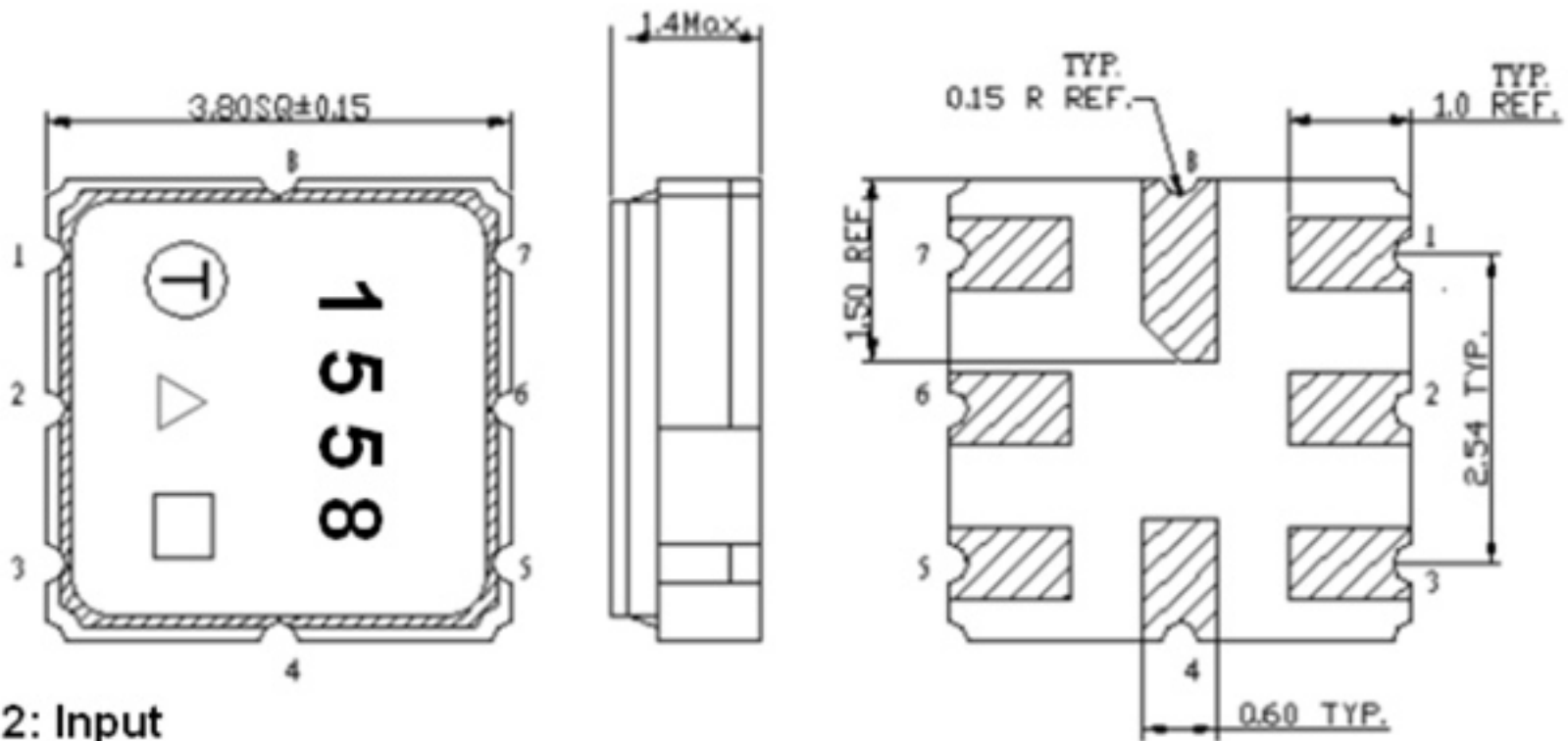
(3) Pass band Response: (span 50 MHz)



(4) S11 & S22 VSWR Response: (span 50 MHz)



E. OUTLINE DRAWING:



- 2: Input
- 6: Output
- 1, 3, 4, 5, 7, 8: Ground
- △ : Year Code
- : Date Code
- Unit: mm

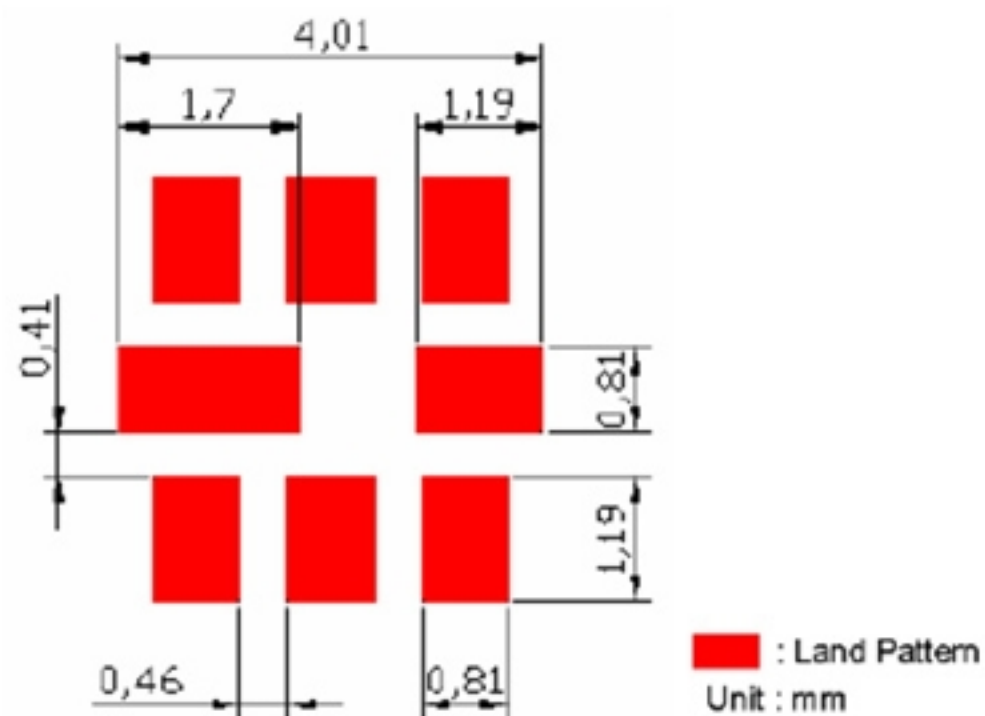
△ Product Year Code

Year	2019	2020
	2021	2022
	2023	2024
	2025	2026
	Product Code	A

Date Code Table:

WK01	WK02	WK03	WK04	WK05	WK06	WK07	WK08	WK09	WK10	WK11	WK12	WK13
A	B	C	D	E	F	G	H	I	J	K	L	M
WK14	WK15	WK16	WK17	WK18	WK19	WK20	WK21	WK22	WK23	WK24	WK25	WK26
N	O	P	Q	R	S	T	U	V	W	X	Y	Z
WK27	WK28	WK29	WK30	WK31	WK32	WK33	WK34	WK35	WK36	WK37	WK38	WK39
a	b	c	d	e	f	g	h	i	j	k	l	m
WK40	WK41	WK42	WK43	WK44	WK45	WK46	WK47	WK48	WK49	WK50	WK51	WK52
n	o	p	q	r	s	t	u	v	w	x	y	z

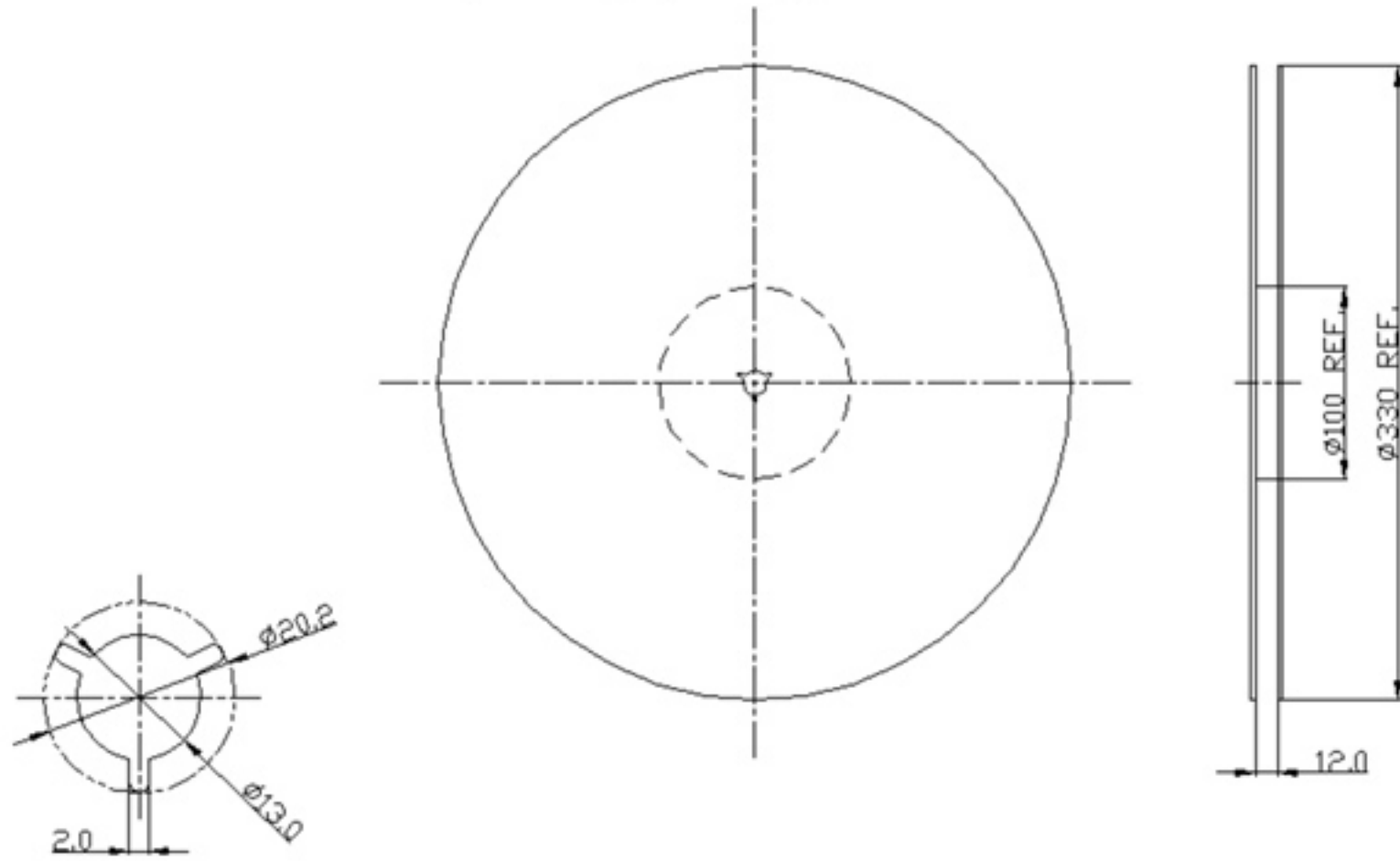
F. PCB Footprint:



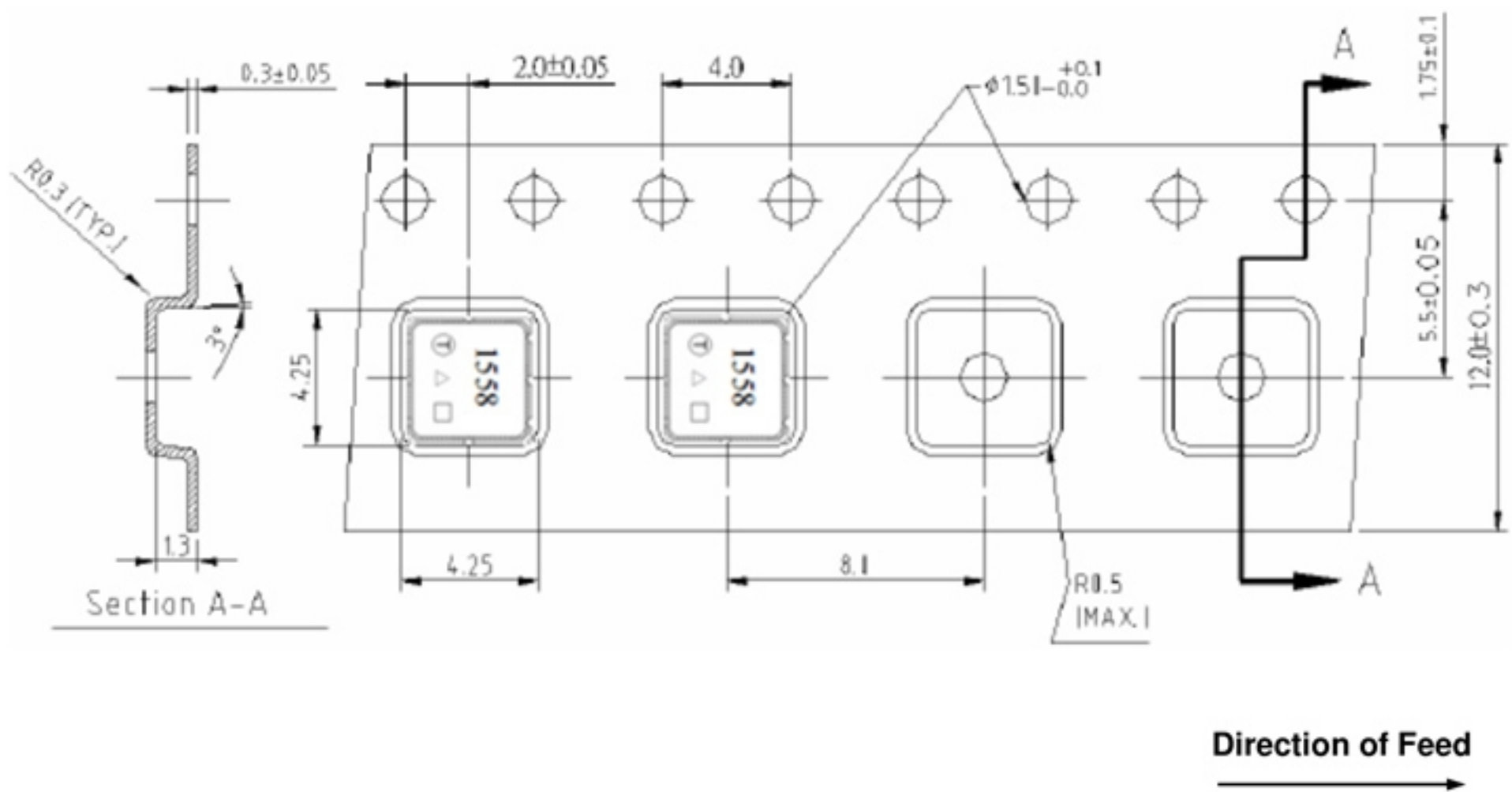
G. PACKING: (Ref: WI-75M03)

1. REEL DIMENSION

(Please refer to FR-75D10 for packing quantity)



3. TAPE DIMENSION



H. STORAGE CONDITIONS:

1. Preheating shall be fixed at $150\sim 180^{\circ}\text{C}$ for 60~90 seconds.
2. Ascending time to preheating temperature 150°C shall be 30 seconds min.
3. Heating shall be fixed at 220°C for 50~80 seconds and at $260^{\circ}\text{C} \pm 5^{\circ}\text{C}$ peak (20~40sec).
4. Time: 2 times.

