

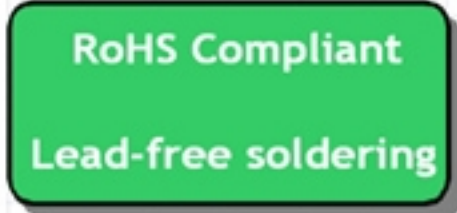
# SAW Filter 800 MHz

MODEL NO.: TA0740A

REV. NO.:3.0

## A. MAXIMUM RATING:

1. Input Power Level: 5 dB<sub>m</sub>
2. DC voltage: 5 V
3. Operating Temperature: -20°C to 70°C
4. Storage Temperature: -40°C to +85°C
5. Moisture Sensitivity Level: Level 1(MSL1)



Electrostatic Sensitive Device

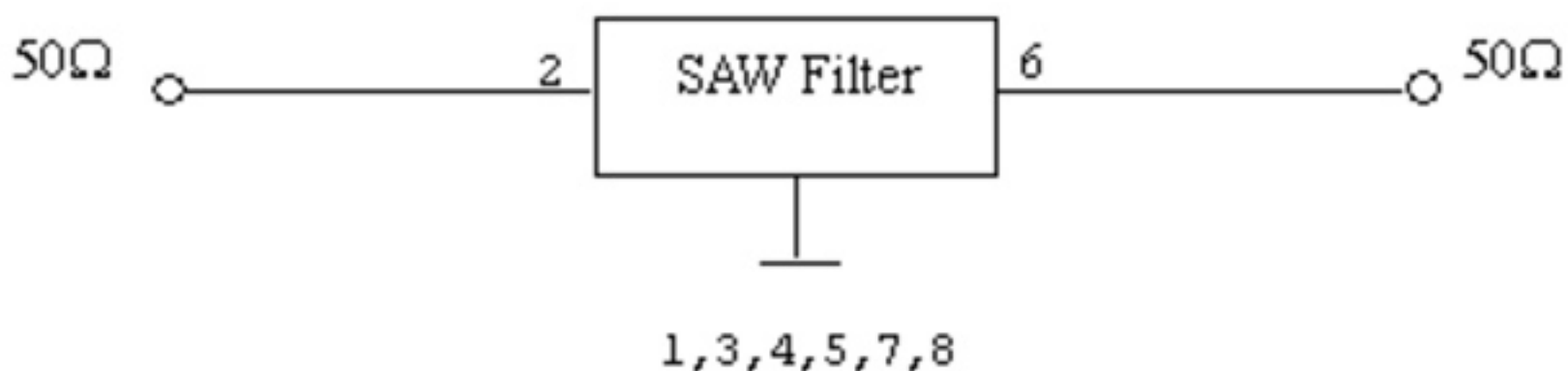
## B. CHARACTERISTICS:

Item		Min.	Typ.	Max.
Center frequency	Fc MHz	-	800	-
Insertion loss	790 ~ 810 MHz IL	-	2.4	3.8
Amplitude ripple	790 ~ 810 MHz	-	0.8	2.0
<b>Attenuation (Reference level from 0dB)</b>				
600 ~ 700	MHz	40	47	-
700 ~ 750	MHz	30	45	-
860 ~ 900	MHz	30	42	-
900 ~ 1000	MHz	38	47	-
Source impedance	Z <sub>s</sub>	-	50	-
Load impedance	Z <sub>L</sub>	-	50	-

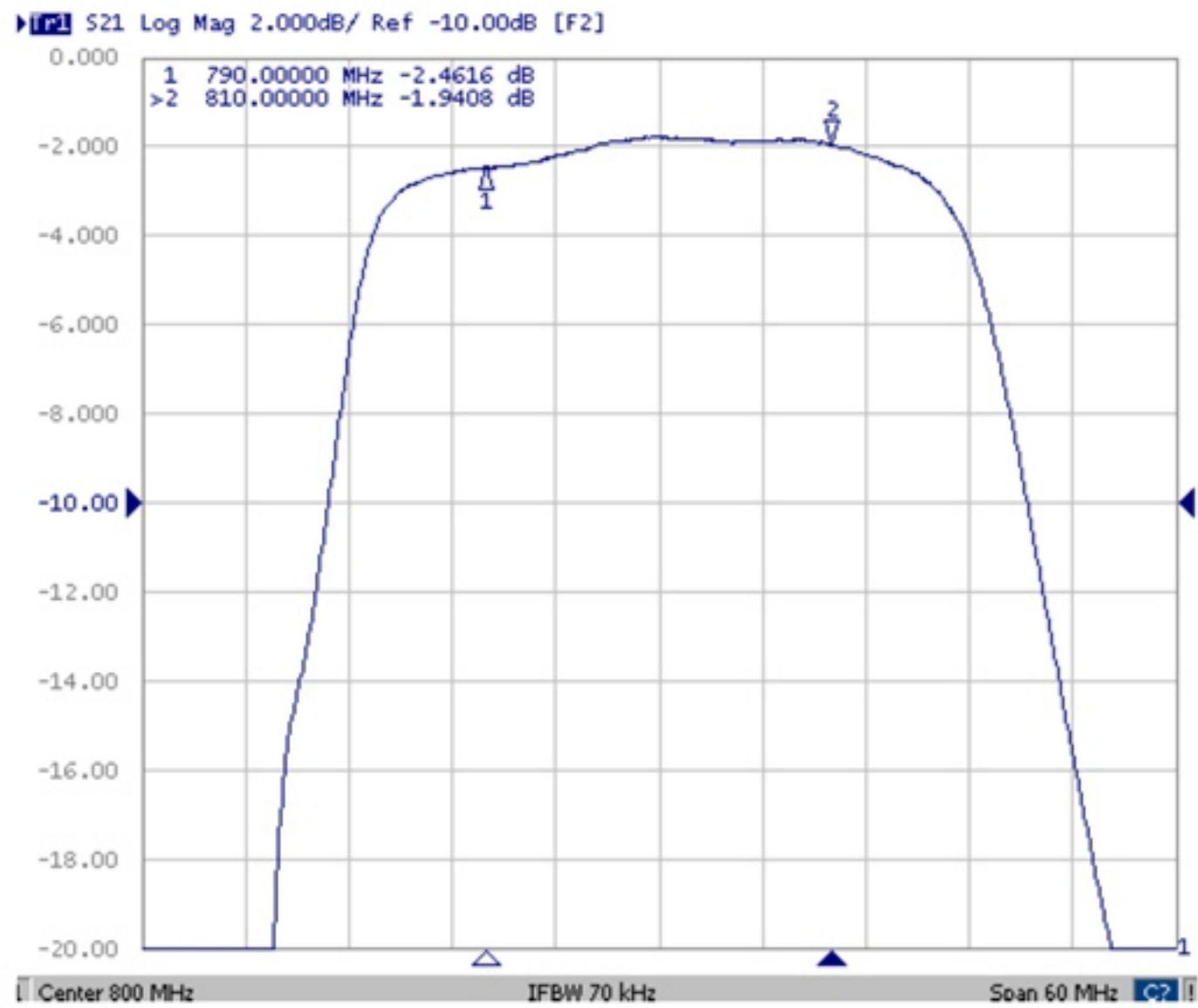
Note1. No matching network required for operation at 50Ω

## C. MEASUREMENT CIRCUIT:

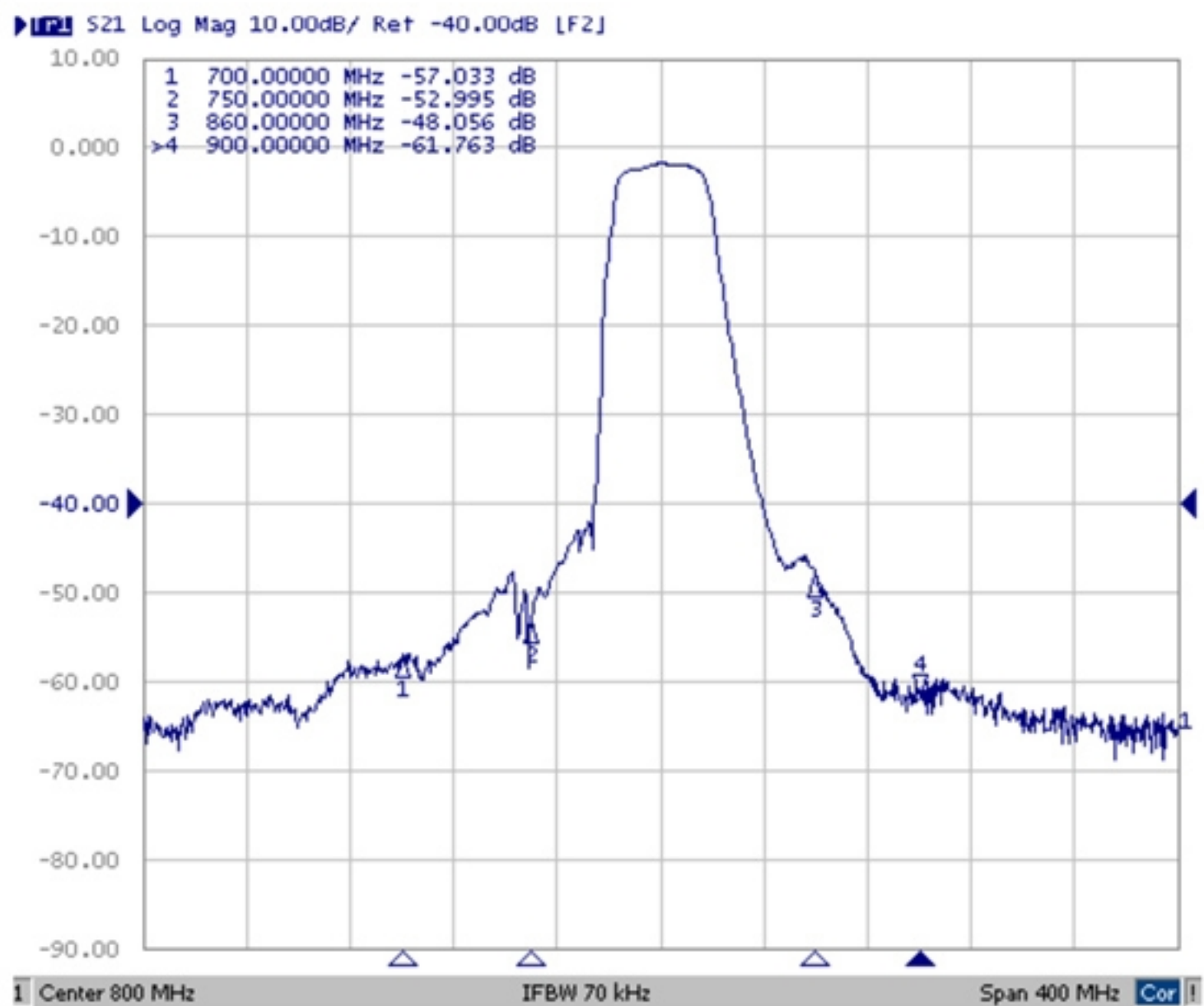
HP Network analyzer



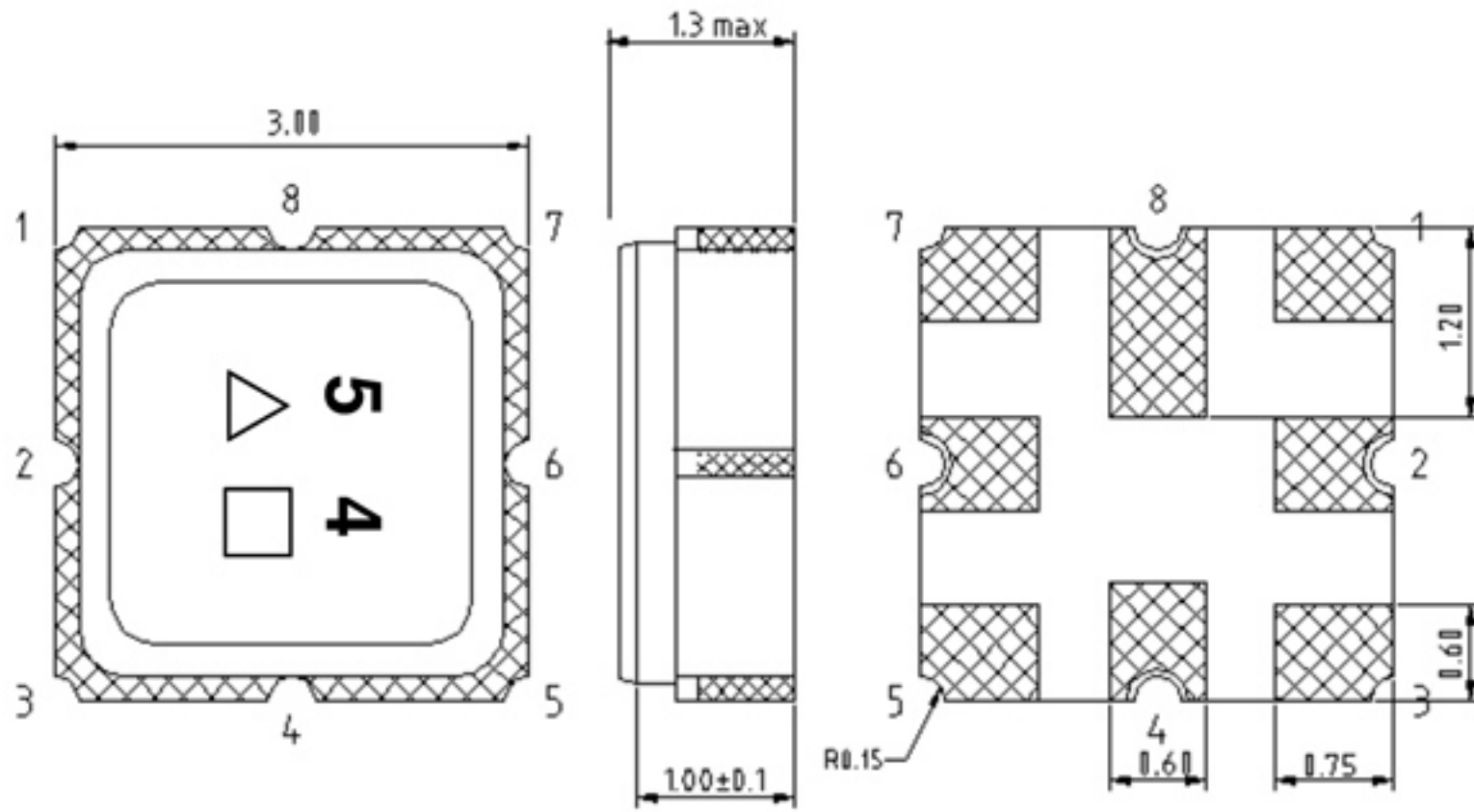
### D. Transfer Function :



### Wideband



**E.OUTLINE DRAWING:**

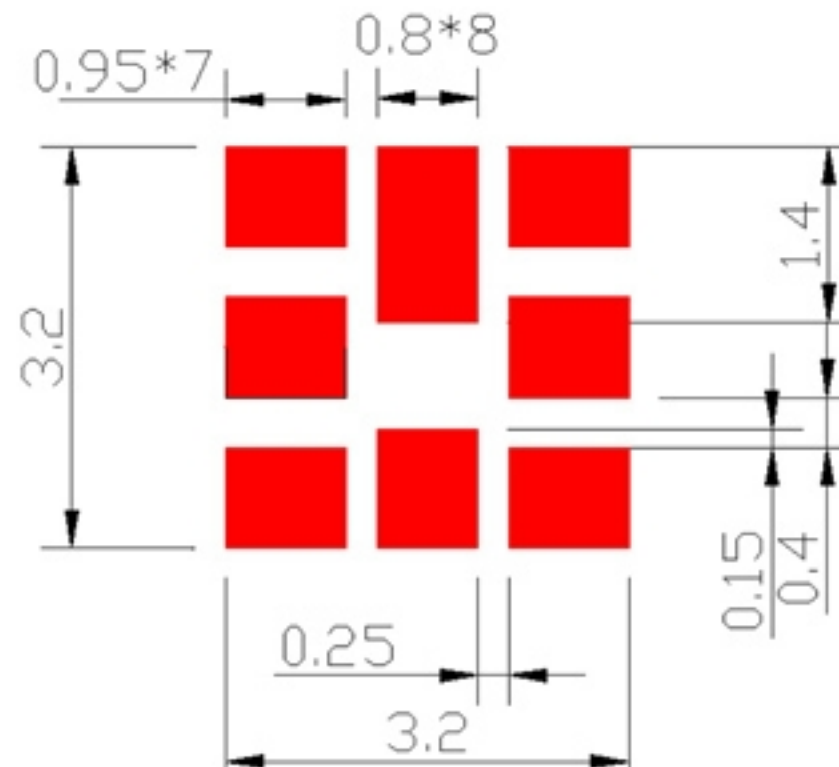


- 2: Input
- 6: Output
- 1, 3, 4, 5, 7, 8: Ground
- △: Year Code: 7 for 2017, 8 for 2018,... 9 for 2029
- : Date Code: provided by planer each year

**Week Code Table**

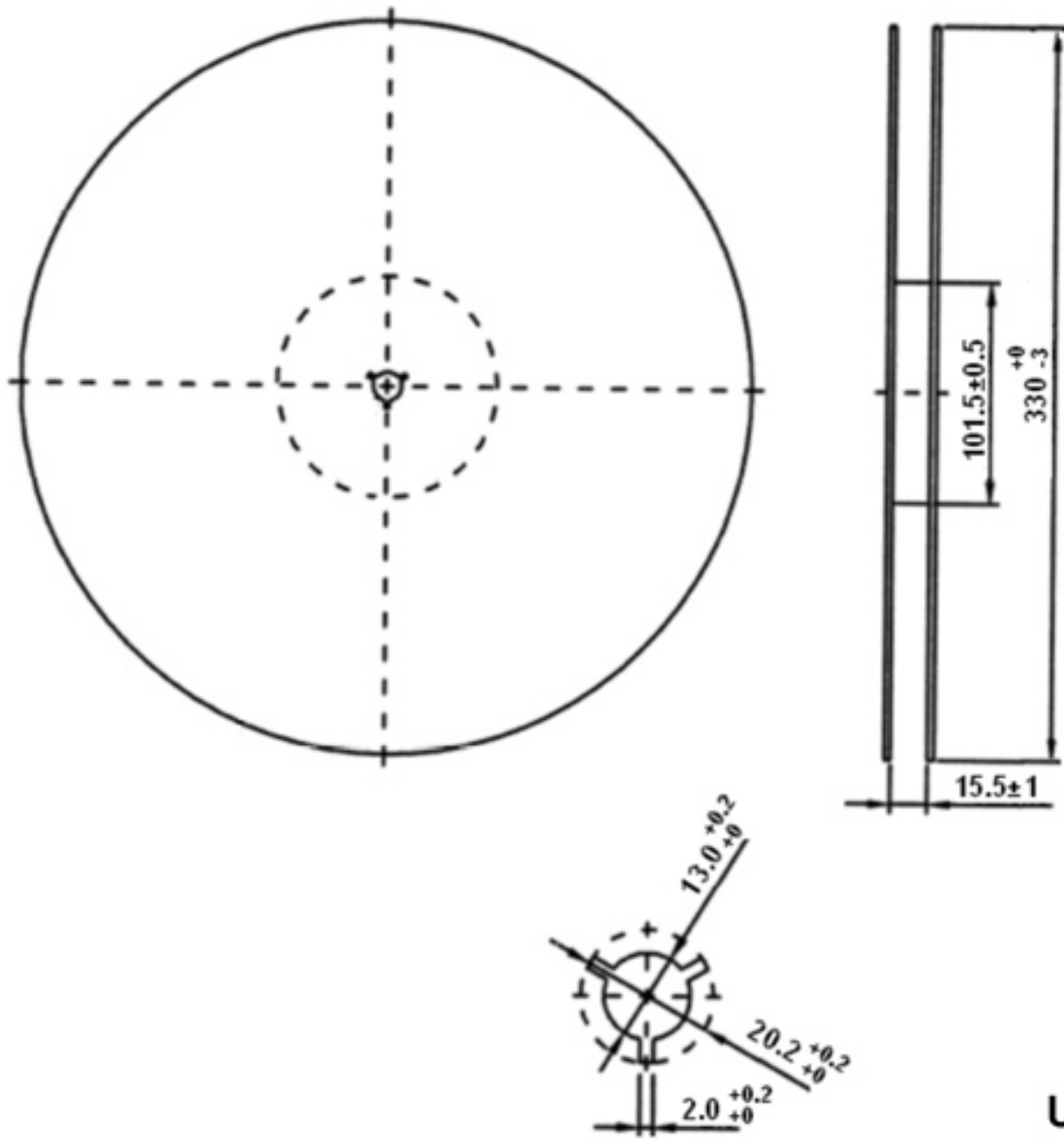
WK01	WK02	WK03	WK04	WK05	WK06	WK07	WK08	WK09	WK10	WK11	WK12	WK13
A	B	C	D	E	F	G	H	I	J	K	L	M
WK14	WK15	WK16	WK17	WK18	WK19	WK20	WK21	WK22	WK23	WK24	WK25	WK26
N	O	P	Q	R	S	T	U	V	W	X	Y	Z
WK27	WK28	WK29	WK30	WK31	WK32	WK33	WK34	WK35	WK36	WK37	WK38	WK39
a	b	c	d	e	f	g	h	i	j	k	l	m
WK40	WK41	WK42	WK43	WK44	WK45	WK46	WK47	WK48	WK49	WK50	WK51	WK52
n	o	p	q	r	s	t	u	v	w	x	y	z

**F.PCB FOOTPRINT:**



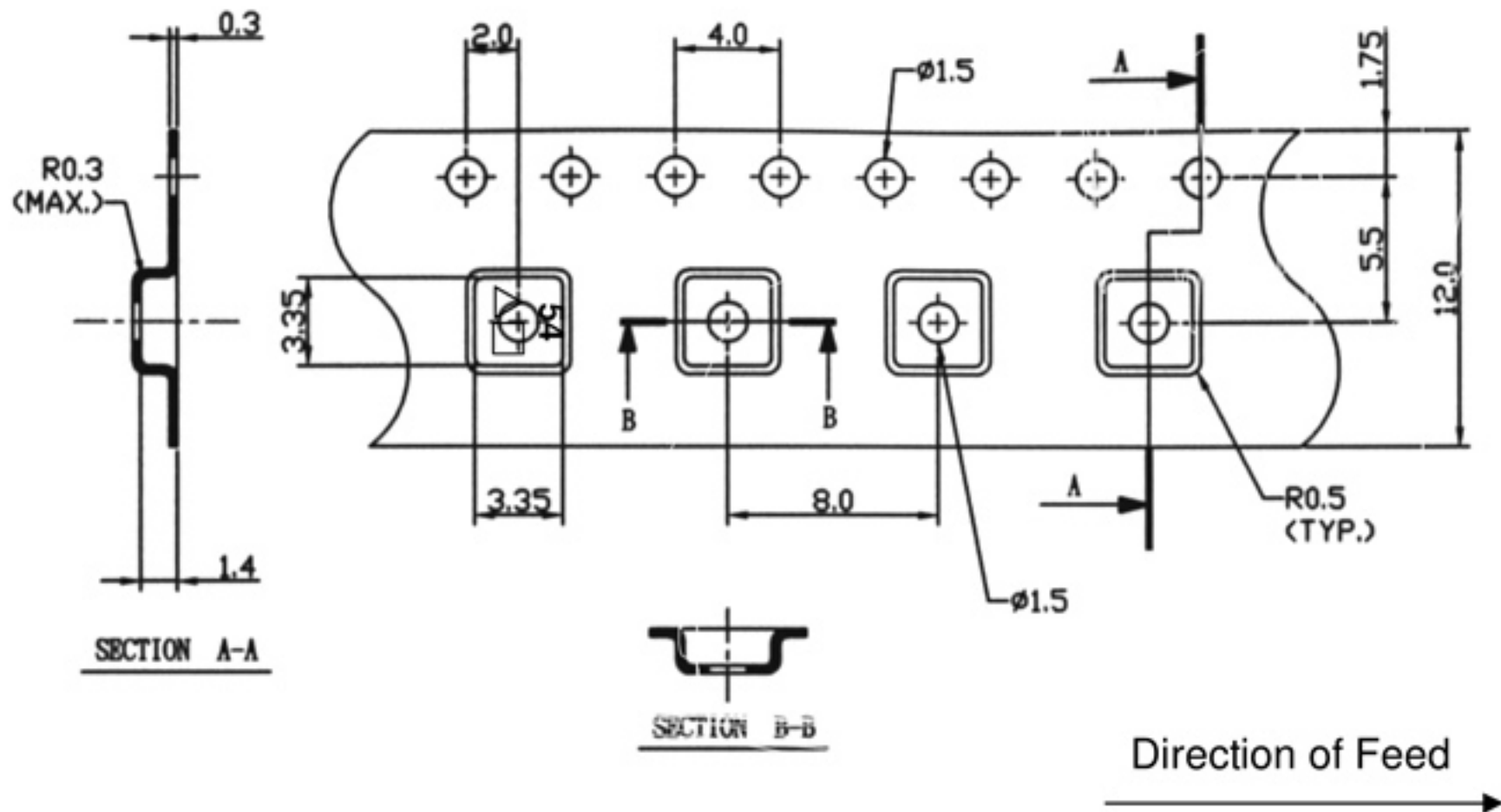
**G. PACKING:**

1. REEL DIMENSION (Please refer to FR-75D10 for packing quantity)



Unit: mm

2. TAPE DIMENSION



## H. RECOMMENDED REFLOW PROFILE:

1. Preheating shall be fixed at  $150\sim 180^{\circ}\text{C}$  for  $60\sim 90$  seconds.
2. Ascending time to preheating temperature  $150^{\circ}\text{C}$  shall be 30 seconds min.
3. Heating shall be fixed at  $220^{\circ}\text{C}$  for  $50\sim 80$  seconds and at  $260^{\circ}\text{C} +0/-5^{\circ}\text{C}$  peak ( $20\sim 40\text{sec}$ ).
4. Time: 2 times.

