

SAW Filter 868.30 MHz

MODEL NO.: TA0257A

REV. NO.:6.0

A. MAXIMUM RATING:

1. Input Power Level: 10 dBm
2. DC voltage: 0 V
3. Operating Temperature: -45°C to +90°C
4. Storage Temperature: -45°C to +90°C
5. Moisture Sensitivity Level: Level 1(MSL1)

RoHS Compliant
Lead free
Lead-free soldering

Electrostatic Sensitive Device

B. ELECTRICAL CHARACTERISTICS:

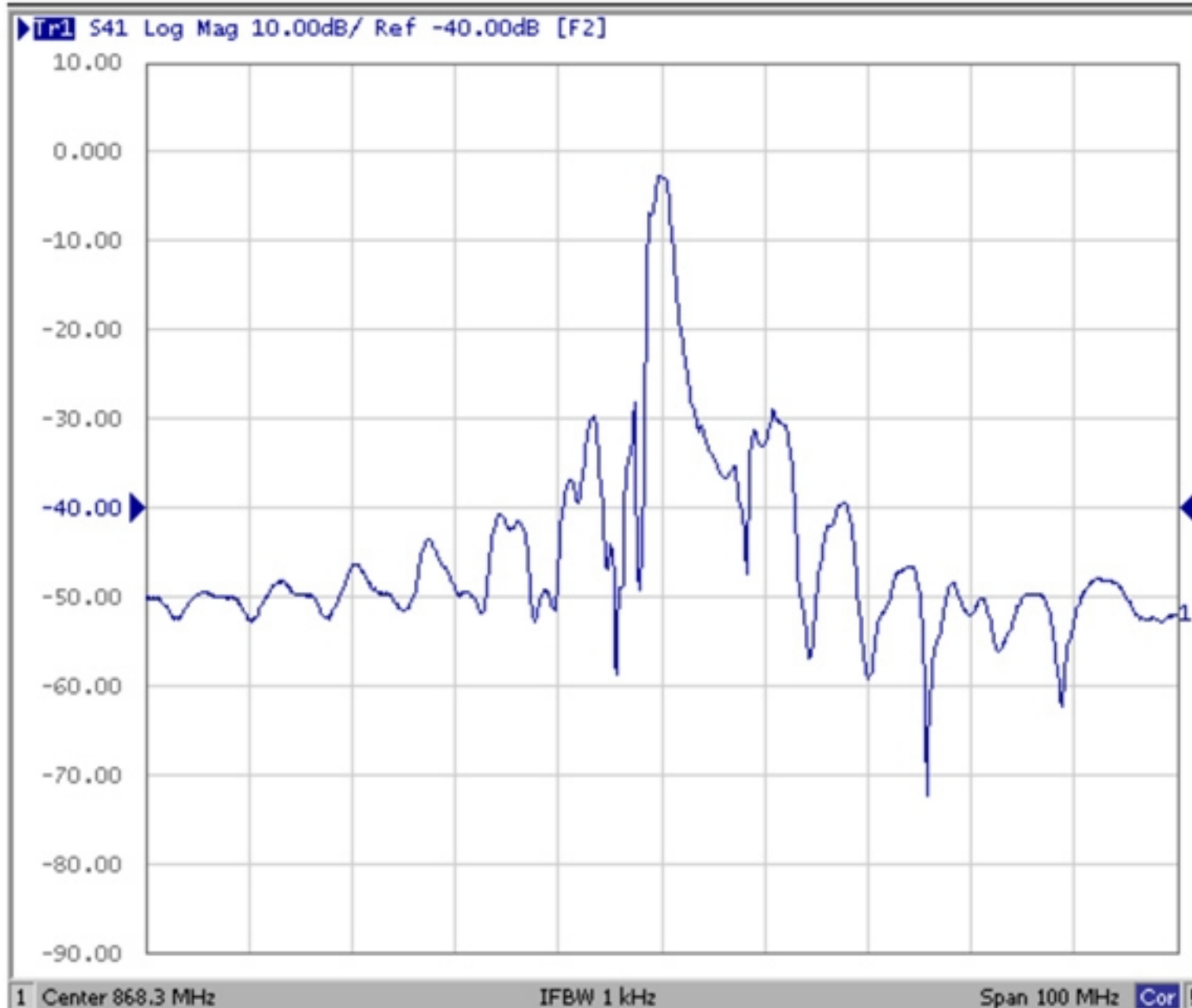
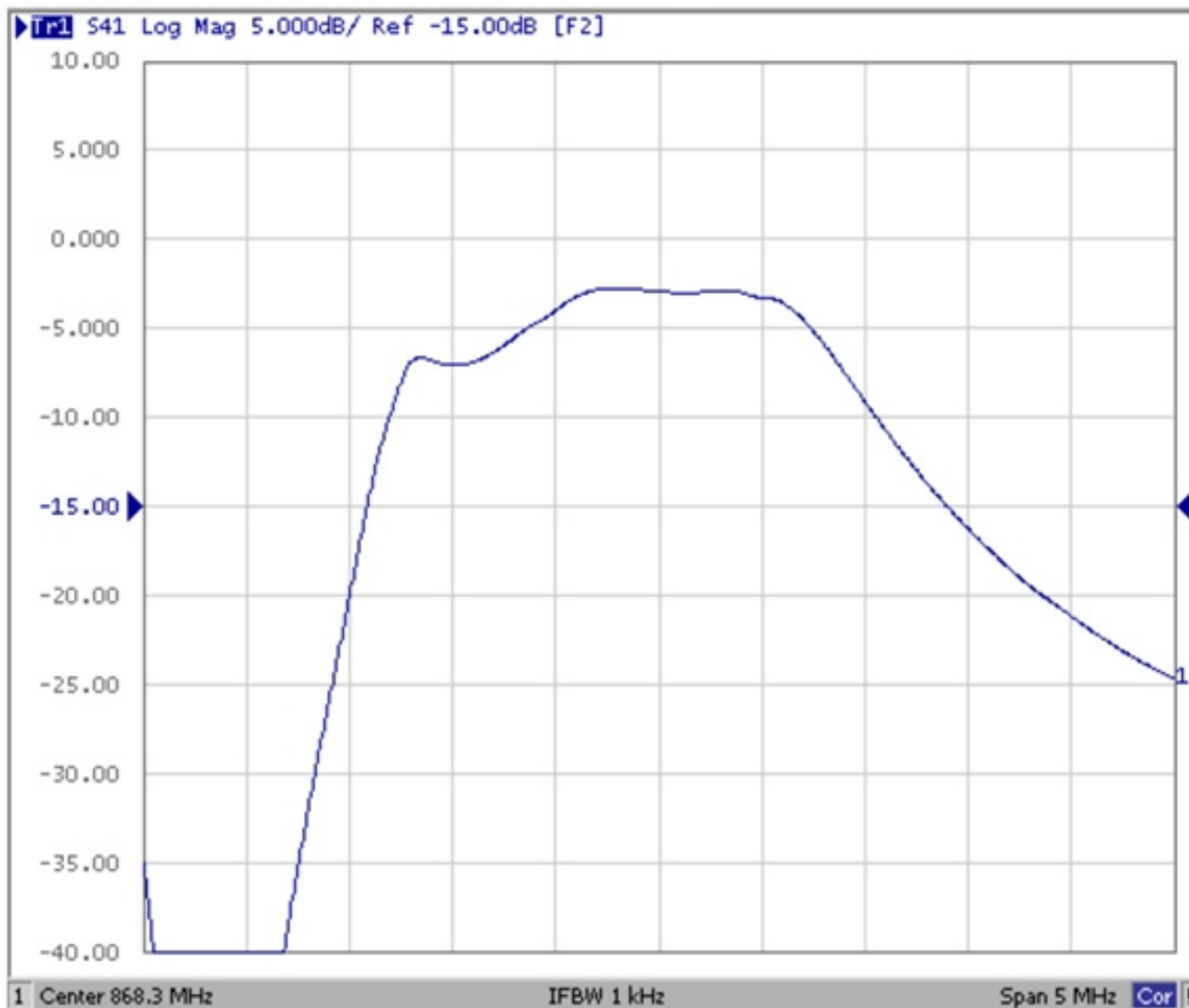
Reference temperature: 25°C

Item	Min.	Typ.	Max.	Note
Center frequency F_c (MHz)	-	868.30	-	1
Minimum I.L. (868~868.78 MHz) (dB) IL_{min}	-	2.7	4.2	
Pass band (relative to IL_{min})				
868~868.78 MHz (dB)	-	1.0	3.0	1
867.9~868.88 MHz (dB)	-	1.5	6.0	
Pass bandwidth (relative to IL_{min}) BW_3 (KHz)	-	1500	-	
Attenuation:(relative to IL_{min}) (dB)				
10~700 MHz (dB)	50	55	-	
700~830 MHz (dB)	40	45	-	
830~850 MHz (dB)	35	40	-	
850~865.02 MHz (dB)	25	28	-	1
871~874.5 MHz (dB)	15	20	-	
874.5~883 MHz (dB)	22	26	-	
883~900 MHz (dB)	30	35	-	
900~1000 MHz (dB)	40	45	-	
Impedance at F_c ; Input $Z_{IN}=R_{IN}/C_{IN}$ Output $Z_{OUT}=R_{OUT}/C_{OUT}$		117Ω // 3.7 pF 117Ω // 3.7 pF		

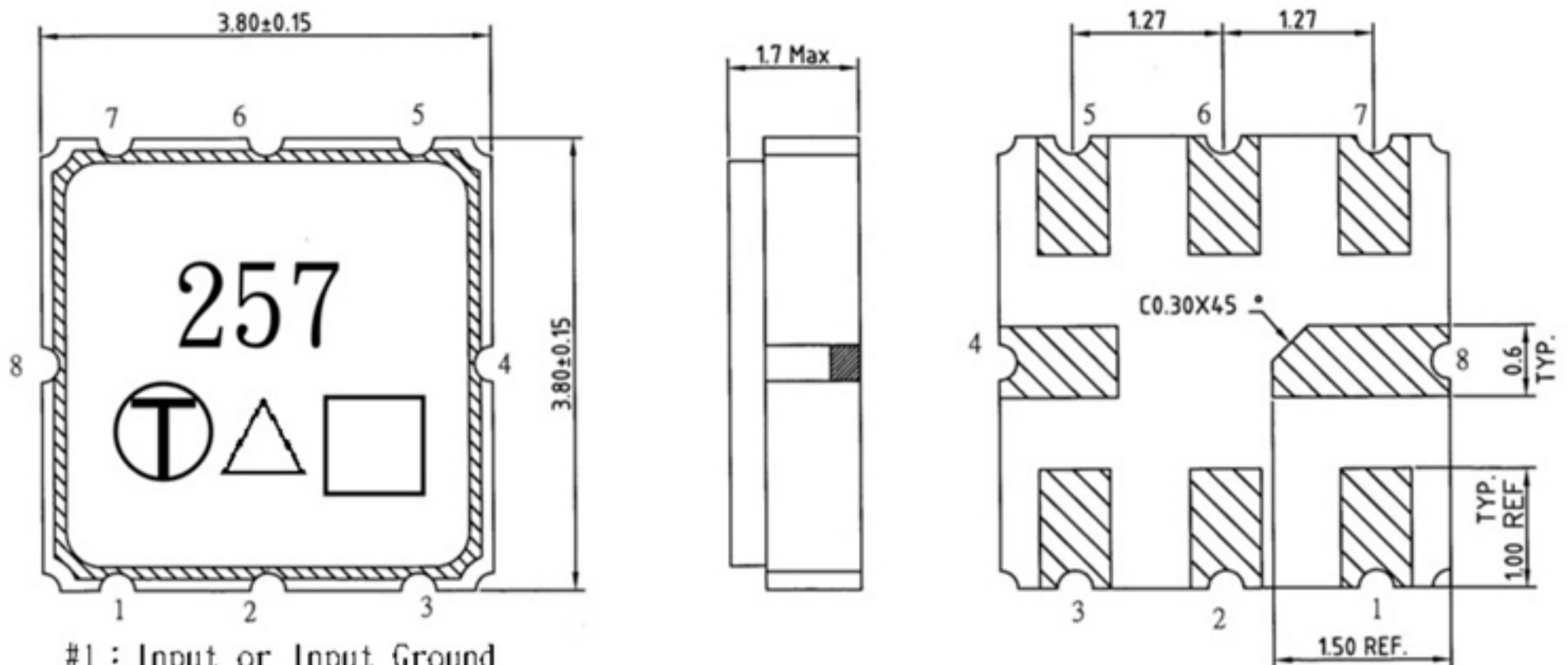
Note1. The standard definitions is in JIS C 6703

C. FREQUENCY CHARACTERISTICS:

The response included the loss of matching circuit.



D. OUTLINE DRAWING:



- #1 : Input or Input Ground
- #2 : Input Ground or Input
- #5 : Output
- #6 : Output Ground
- #4、8 : Case Ground
- #3、7 : Ground
- △ : Year code
- : Date code
- Unit : mm

Product / Year Code

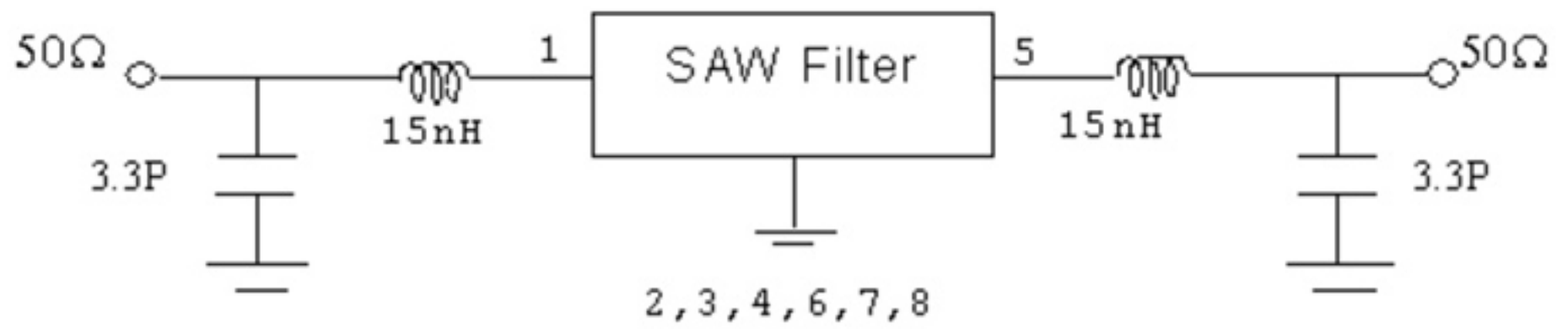
Year	2019 2021	2020 2022
Product Code	A	a

Week Code Table

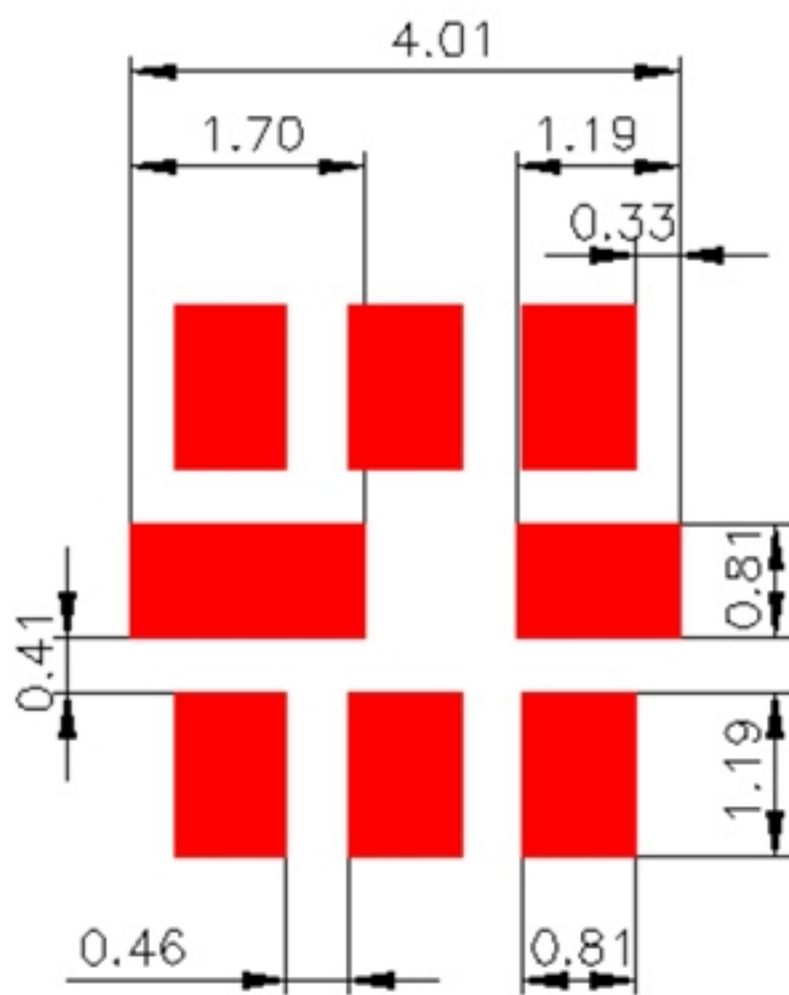
WK01	WK02	WK03	WK04	WK05	WK06	WK07	WK08	WK09	WK10	WK11	WK12	WK13
A	B	C	D	E	F	G	H	I	J	K	L	M
WK14	WK15	WK16	WK17	WK18	WK19	WK20	WK21	WK22	WK23	WK24	WK25	WK26
N	O	P	Q	R	S	T	U	V	W	X	Y	Z
WK27	WK28	WK29	WK30	WK31	WK32	WK33	WK34	WK35	WK36	WK37	WK38	WK39
a	b	c	d	e	f	g	h	i	j	k	l	m
WK40	WK41	WK42	WK43	WK44	WK45	WK46	WK47	WK48	WK49	WK50	WK51	WK52
n	o	p	q	r	s	t	u	v	w	x	y	z

E. MEASUREMENT CIRCUIT:

HP Network analyzer

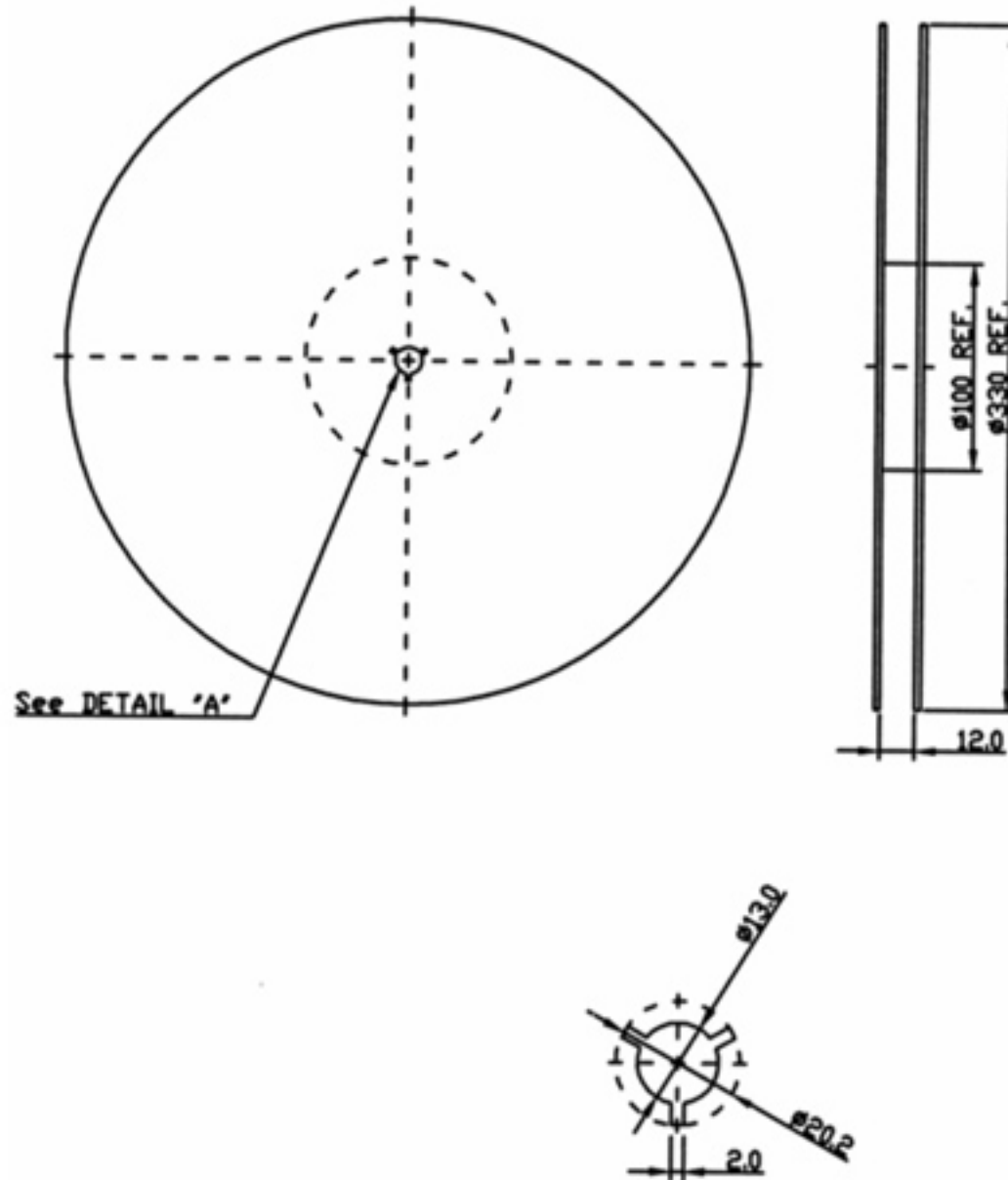


F. PCB FOOTPRINT:

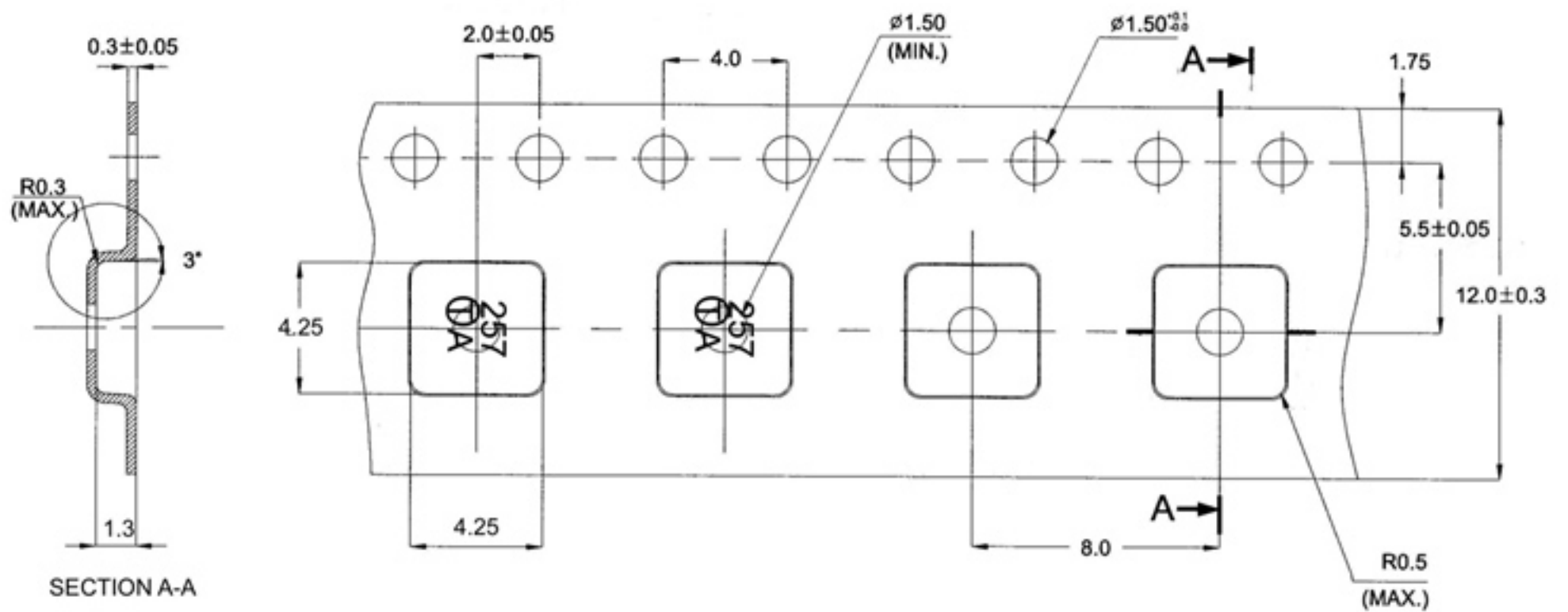


G. PACKING:

1. REEL DIMENSION (Please refer to FR-75D10 for packing quantity)



2. TAPE DIMENSION



H. RECOMMENDED REFLOW PROFILE:

1. Preheating shall be fixed at $150\sim 180^{\circ}\text{C}$ for $60\sim 90$ seconds.
2. Ascending time to preheating temperature 150°C shall be 30 seconds min.
3. Heating shall be fixed at 220°C for $50\sim 80$ seconds and at $260^{\circ}\text{C} +0/-5^{\circ}\text{C}$ peak ($20\sim 40\text{sec}$).
4. Time: 2 times.

