

LTCC Filter 902.5(890~915) MHz SMD 2.0X1.25 mm (25 MHz BW)

MODEL NO.:TL0023A

REV.1

A. MAXIMUM RATING:

1. Operating temperature range: -40 °C to +85 °C
2. Storage temperature range: -40 °C to +85 °C
3. Moisture Sensitive Level: Level 1 (MSL1)

RoHS Compliant
Lead free
Lead-free soldering

Electrostatic Sensitive Device (ESD)

B. ELECTRICAL CHARACTERISTICS:

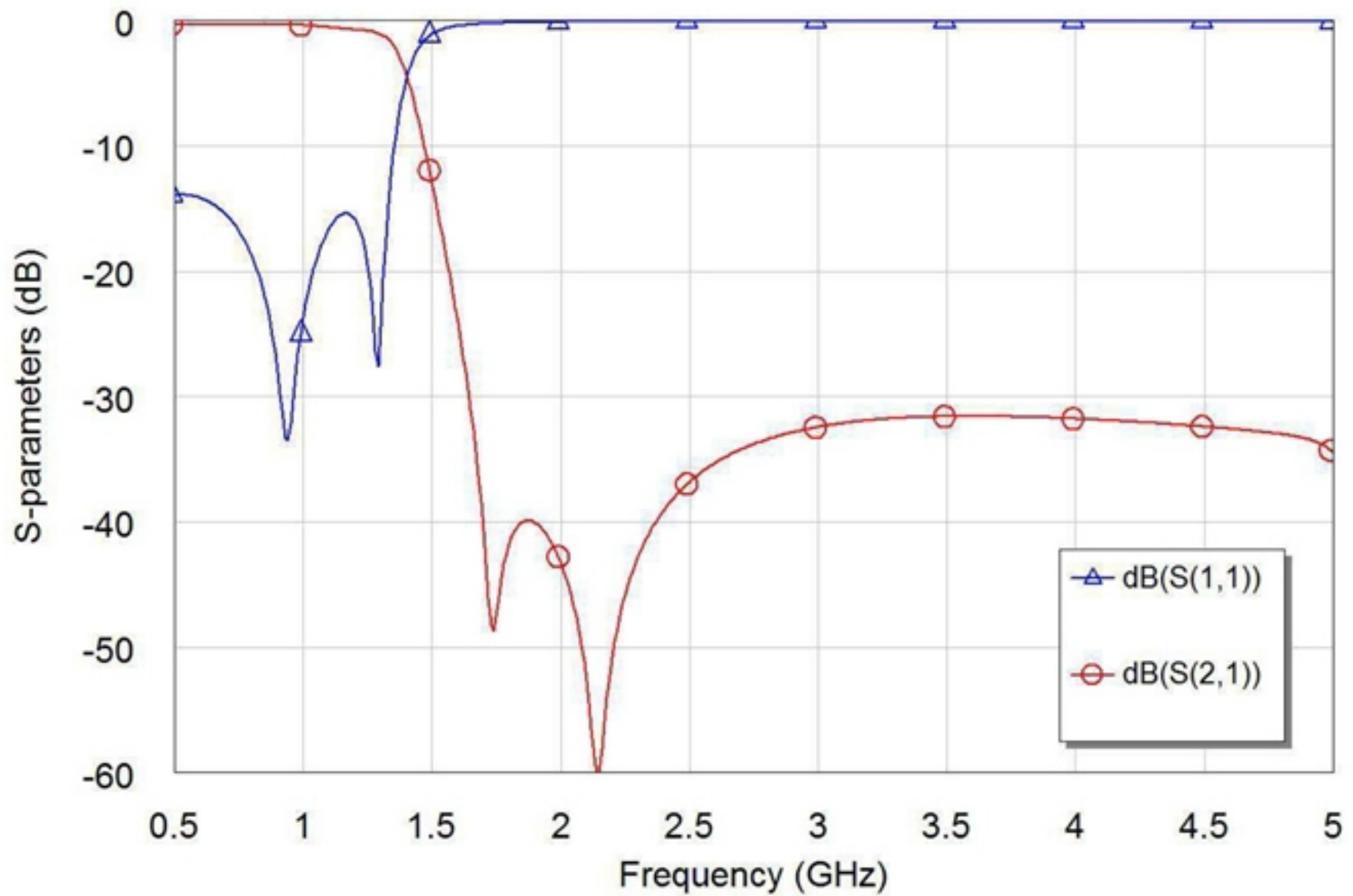
Source impedance (unbalanced) : $Z_s = 50 \Omega$

Load Impedance (balanced) : $Z_L = 50 \Omega$

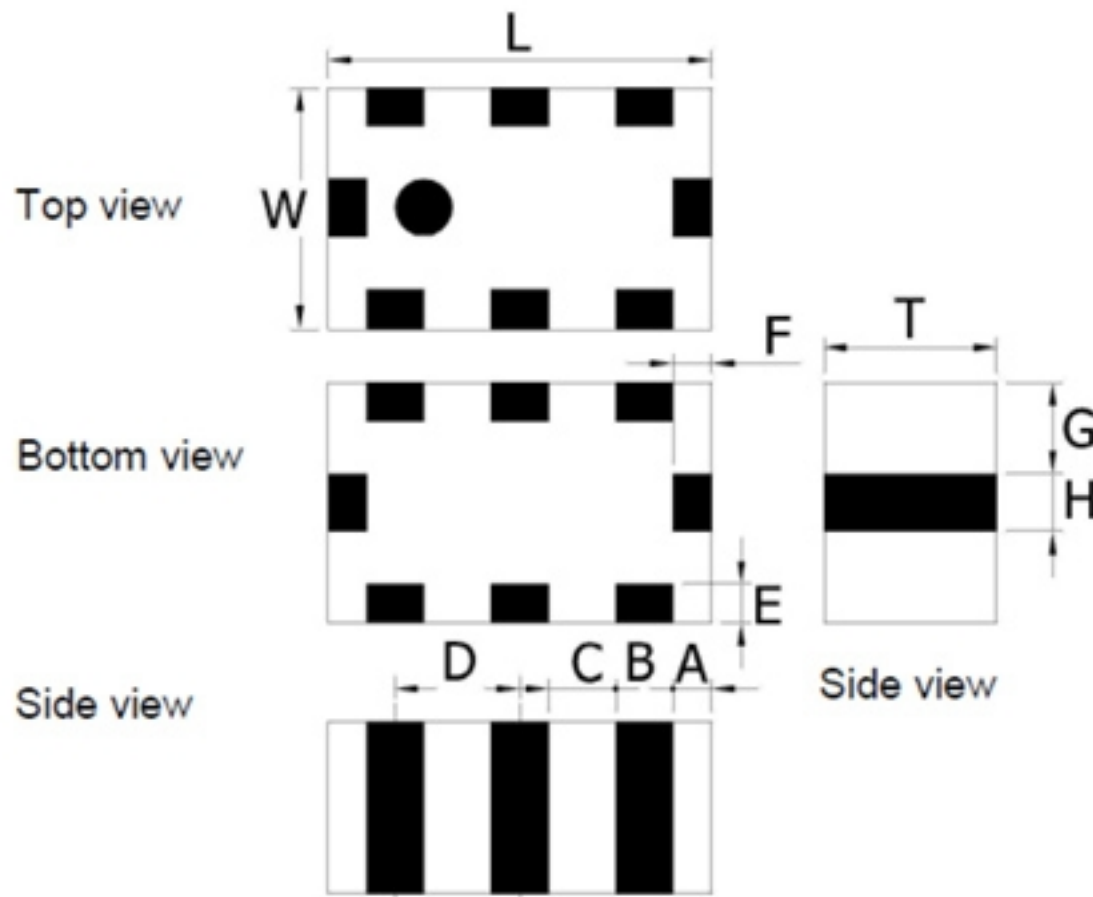
Item	Unit	Spec
Frequency Range	MHz	902.5±12.5
Insertion loss (890 ~ 915 MHz) 25°C IL	dB	0.6 Max
Insertion loss (890 ~ 915 MHz) -40~85°C IL	dB	0.75 Max
VSWR	dB	2.0 Max
Attenuation (Reference level from 0 dB)		
1720 ~ 1765 MHz	dB	40 Min
1780 ~ 1830 MHz	dB	30 Min
2670 ~ 2745 MHz	dB	30 Min

C. FREQUENCY CHARACTERISTICS:

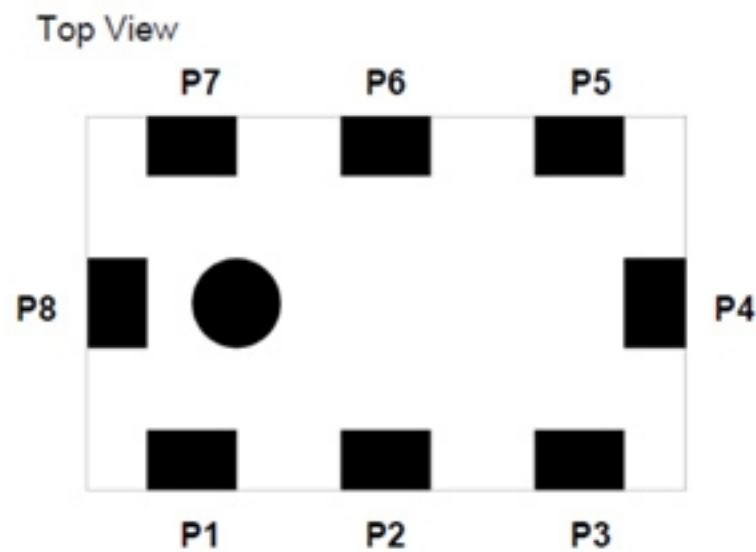
Frequency Response



D. Outline Drawing :



L	2.00 ± 0.15
W	1.25 ± 0.10
T	0.95 ± 0.10
A	0.20 ± 0.10
B	0.30 ± 0.10
C	0.35 ± 0.10
D	0.65 ± 0.10
E	0.20 ± 0.10
F	0.20 ± 0.10
G	0.475 ± 0.10
H	0.30 ± 0.10

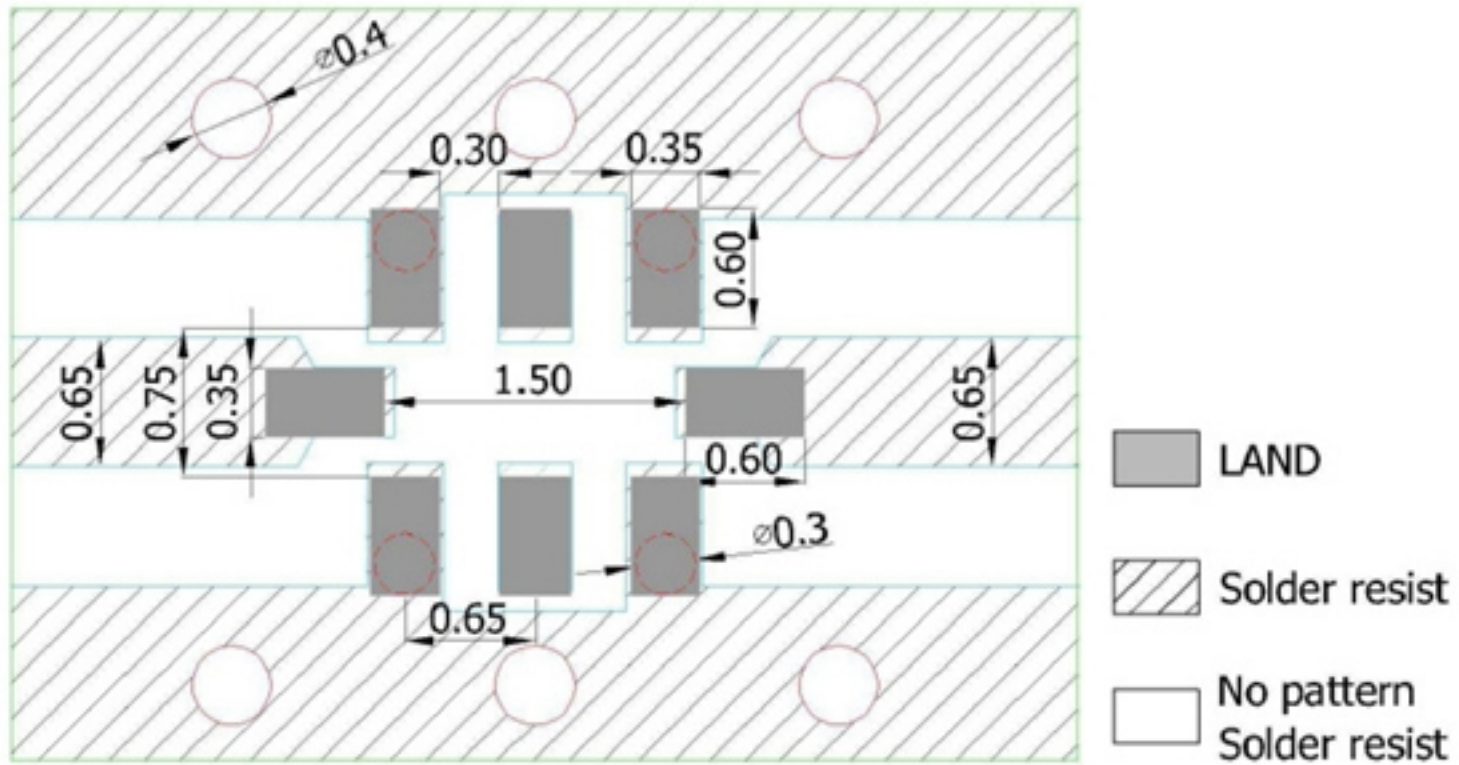


PIN	Definition	PIN	Definition
P1	Ground	P5	Ground
P2	NC	P6	NC
P3	Ground	P7	Ground
P4	Input / output	P8	Input / output

Date code

RF	LPF	2012	0G9	D	1	T
RF device	Product Code LPF : Low Pass Filter	Dimension code Per 2 digits of Length, Width, : e.g. : 2012 = Length 20, Width 12,	Central Frequency 0G9 :0.9 GHz	Application D :GSM900/ DCS1800	Specification Design code	Packing T : Reeled

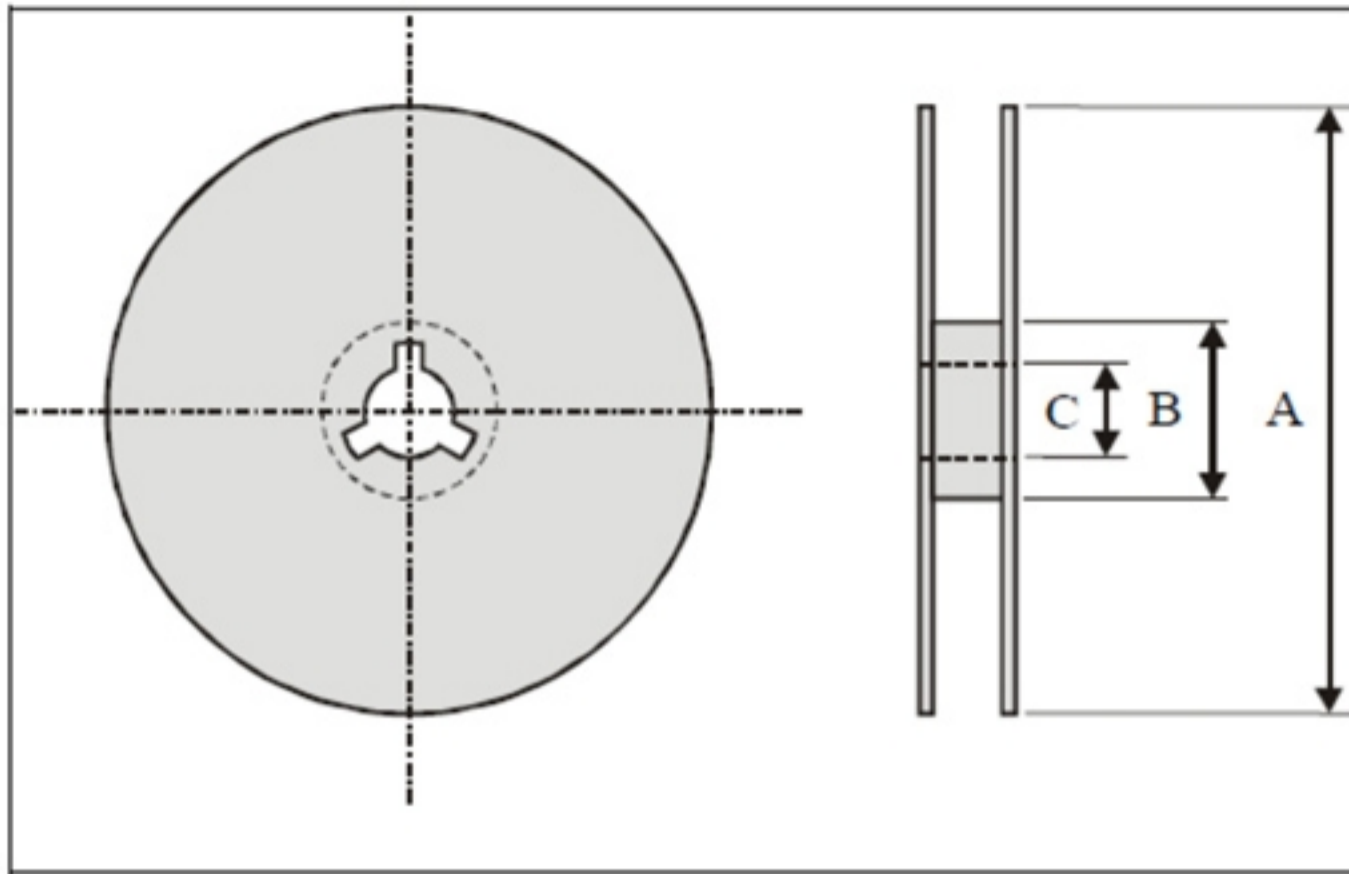
E. PCB Footprint



F. PACKING:

1. REEL DIMENSION

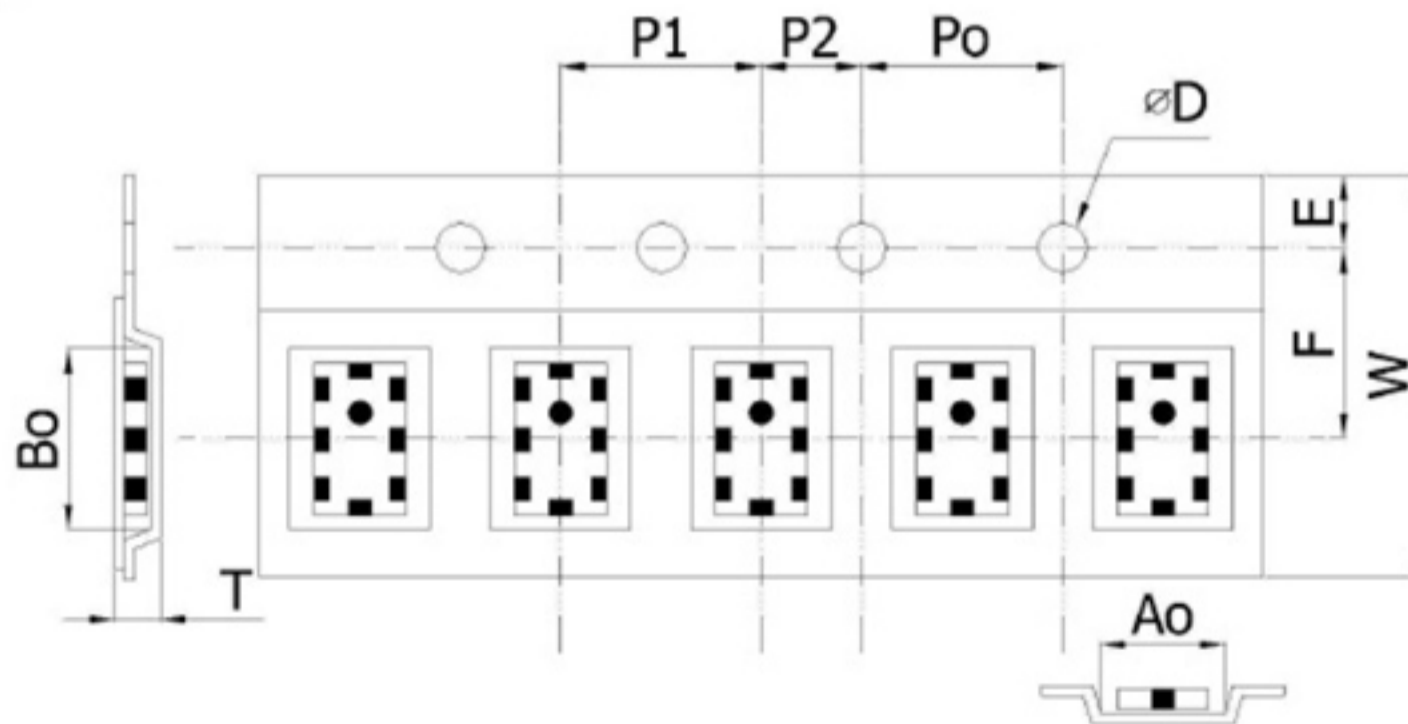
(Please refer to FR-75D10 for packing quantity)



Index	A	B	C
Dimension (mm)	178.0	60.0	13.0

2. TAPE

DIMENSION



Plastic Tape specifications (unit :mm)

Index	Ao	Bo	øD	T	W
Dimension (mm)	1.40 ± 0.10	2.30 ± 0.10	1.55 + 0.10	1.10 ± 0.10	8.0 ± 0.10
Index	E	F	Po	P1	P2
Dimension (mm)	1.75 ± 0.10	3.50 ± 0.05	4.00 ± 0.10	4.00 ± 0.10	2.00 ± 0.10

G . RECOMMENDED REFLOW PROFILE :

Typical examples of soldering processes that provide reliable joints without any damage are given in Fig 2,

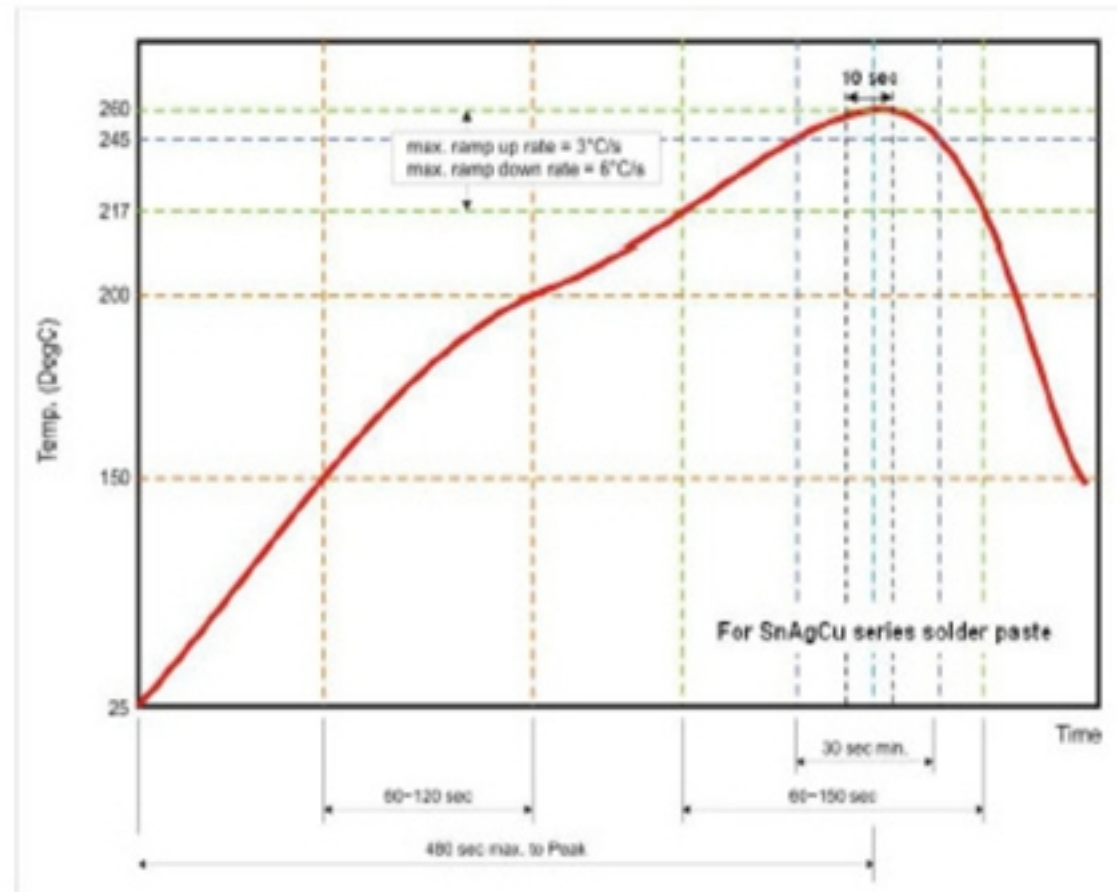


Fig 2. Infrared soldering profile