

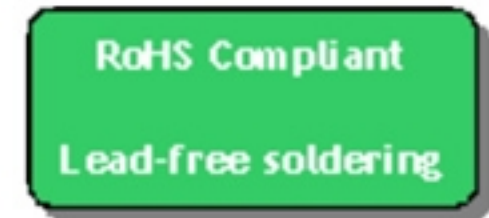
892.5 MHz SAW Band-stop filter (BW 25 MHz) SMD 3.0x3.0mm

MODEL NO.:TE0167AA3213

REV. NO.:1.0

A. MAXIMUM RATING:

1. Input Power Level: 20 dBm
2. DC Voltage : 0 V
3. Operating Temperature: -40 °C to +85 °C
4. Storage Temperature: -40 °C to +85 °C
5. Moisture Sensitive Level: Level 1 (MSL1)



Electrostatic Sensitive Device (ESD)

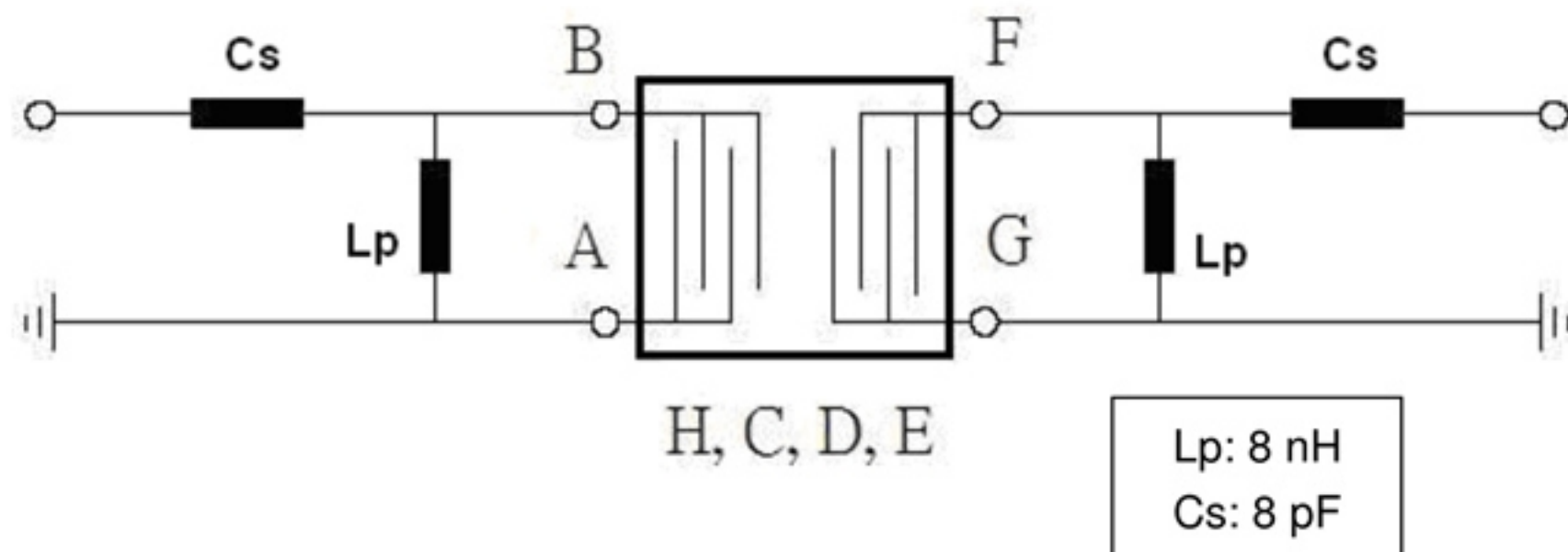
B. ELECTRICAL CHARACTERISTICS:

Terminating source impedance (single) : $Z_s = 50 \Omega$

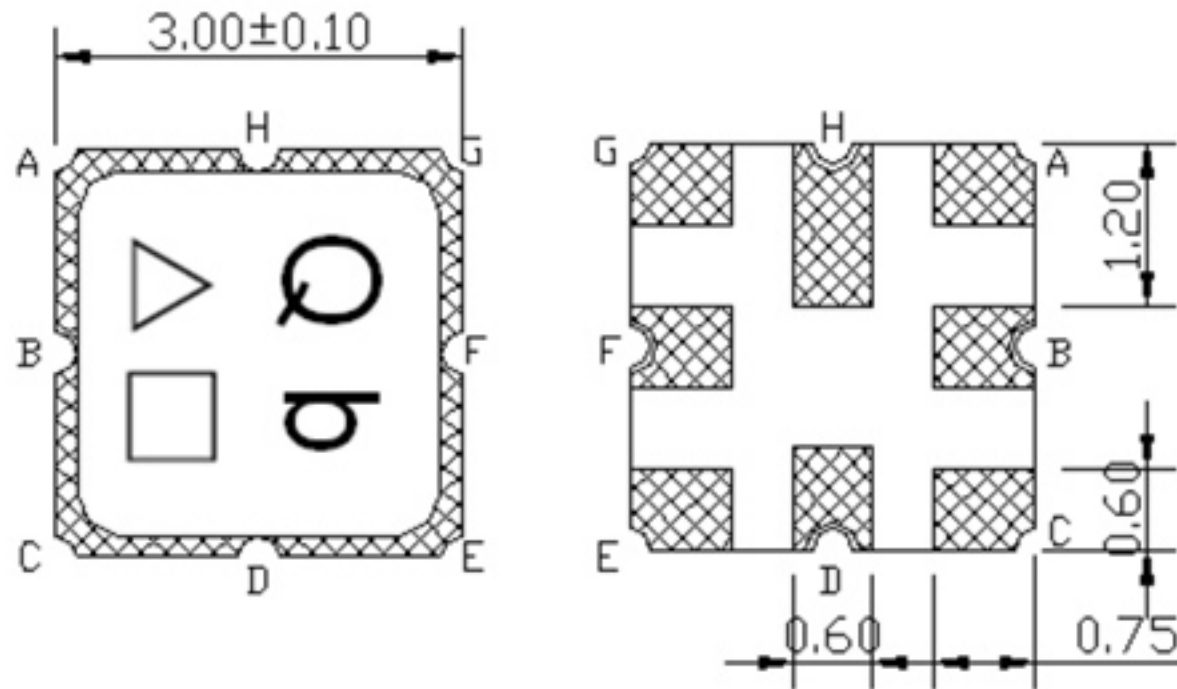
Terminating load impedance(single) : $Z_L = 50 \Omega$

Item	Unit	Min.	Typ.	Max.	
Center frequency	MHz	-	892.5	-	
Maximum Insertion Loss					
920 ~ 925 MHz	dB	-	2.8	3.5	
Attenuation (reference from 0dB)					
880 ~ 900 MHz	dB	20	28	-	
900 ~ 905 MHz	dB	15	26	-	
915 MHz	dB	2.5	5	-	
Source impedance	Z_s	Ω	-	50	-
Load impedance	Z_L	Ω	-	50	-

C. TEST CIRCUIT:



D. OUTLINE DRAWING:



Pin #	Function
(A)	Ground
(B)	Input
(C)	Ground
(D)	Ground
(E)	Ground
(F)	Output
(G)	Ground
(H)	Ground

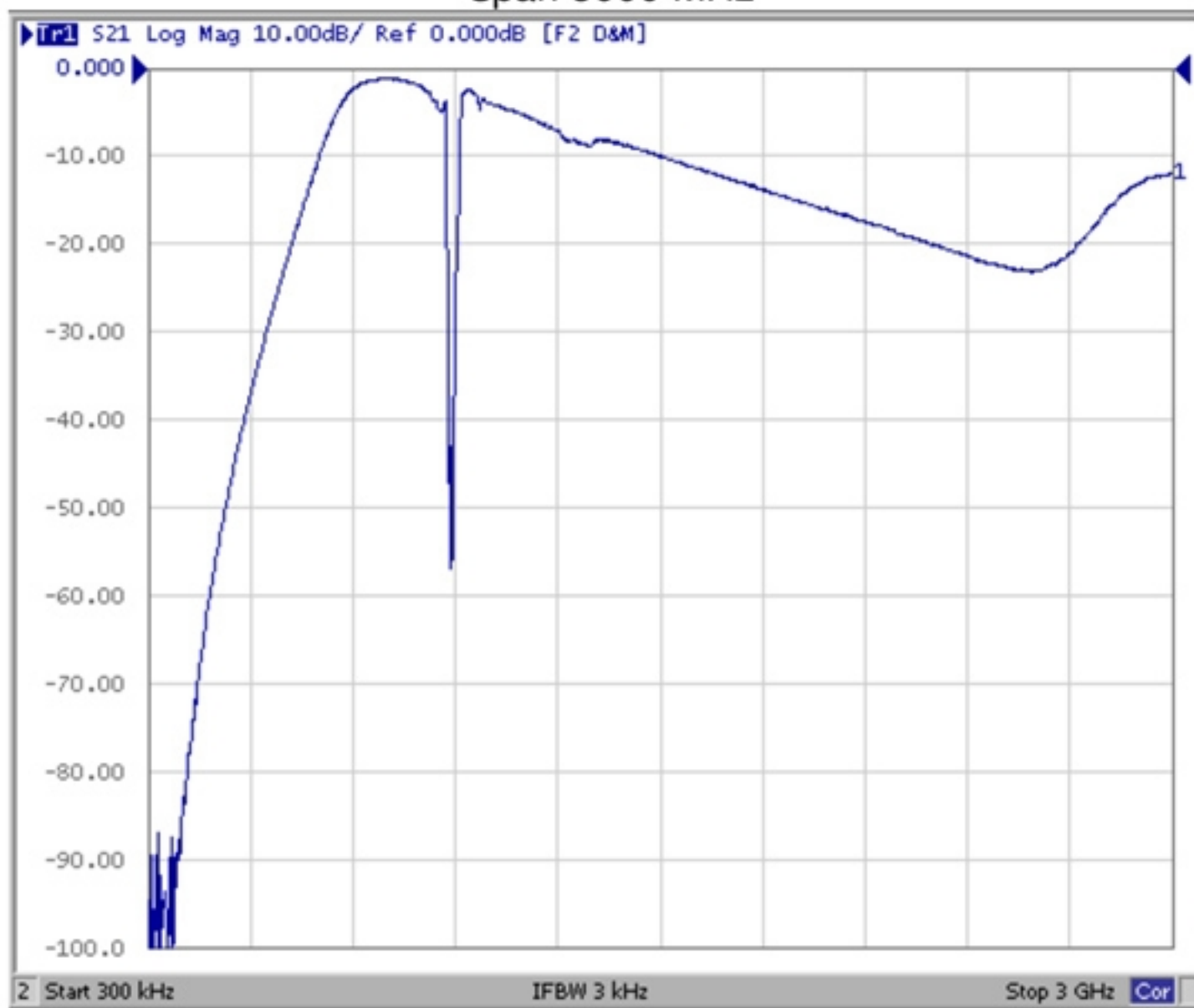
△ : Year Code (2009->9, 2010->0, ..., 2018->8)

□ : Date Code (Follow the table from planner each year)

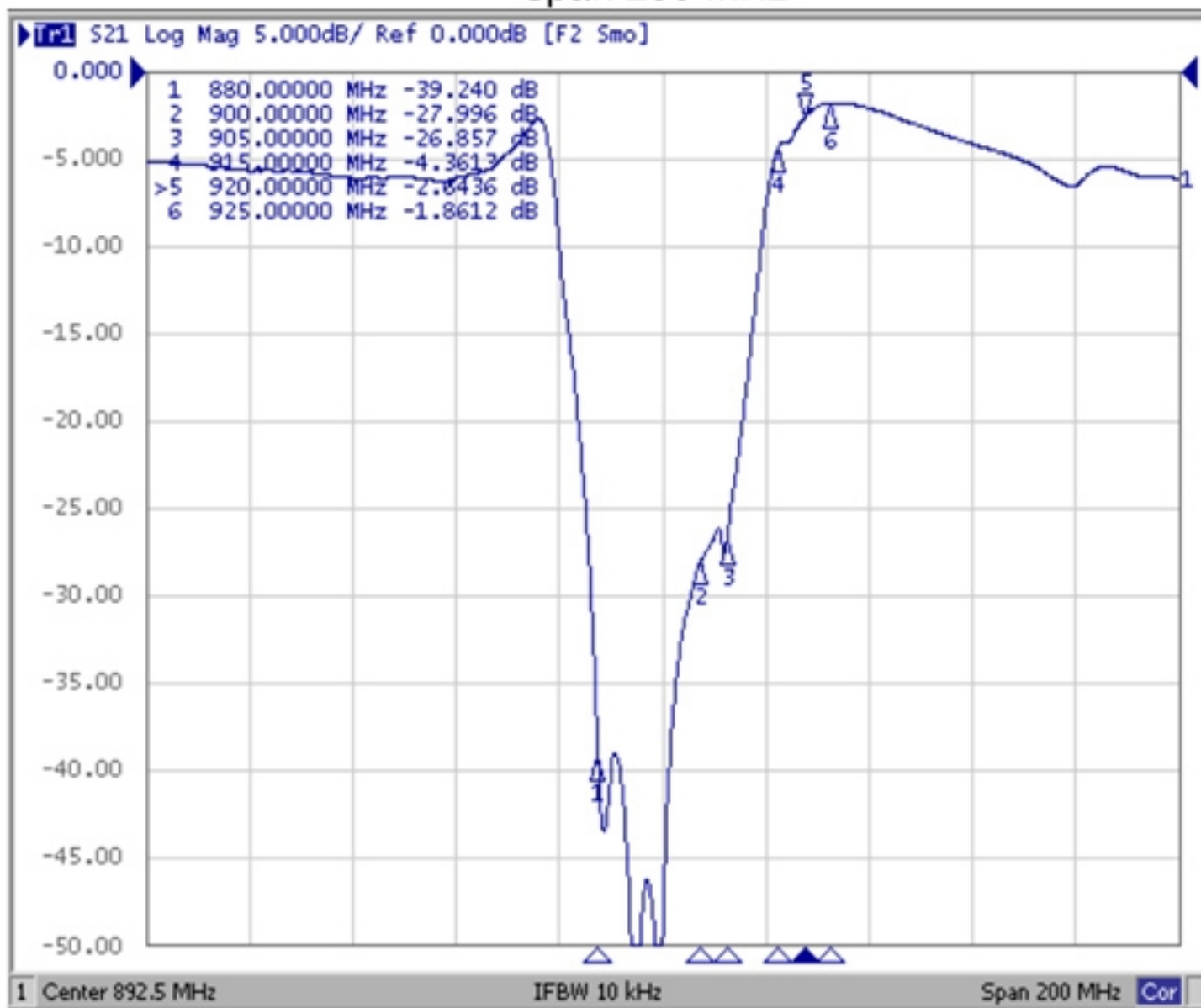
WK01	WK02	WK03	WK04	WK05	WK06	WK07	WK08	WK09	WK10	WK11	WK12	WK13
A	B	C	D	E	F	G	H	I	J	K	L	M
WK14	WK15	WK16	WK17	WK18	WK19	WK20	WK21	WK22	WK23	WK24	WK25	WK26
N	O	P	Q	R	S	T	U	V	W	X	Y	Z
WK27	WK28	WK29	WK30	WK31	WK32	WK33	WK34	WK35	WK36	WK37	WK38	WK39
a	b	c	d	e	f	g	h	i	j	k	l	m
WK40	WK41	WK42	WK43	WK44	WK45	WK46	WK47	WK48	WK49	WK50	WK51	WK52
n	o	p	q	r	s	t	u	v	w	x	y	z

E. Frequency Characteristics:

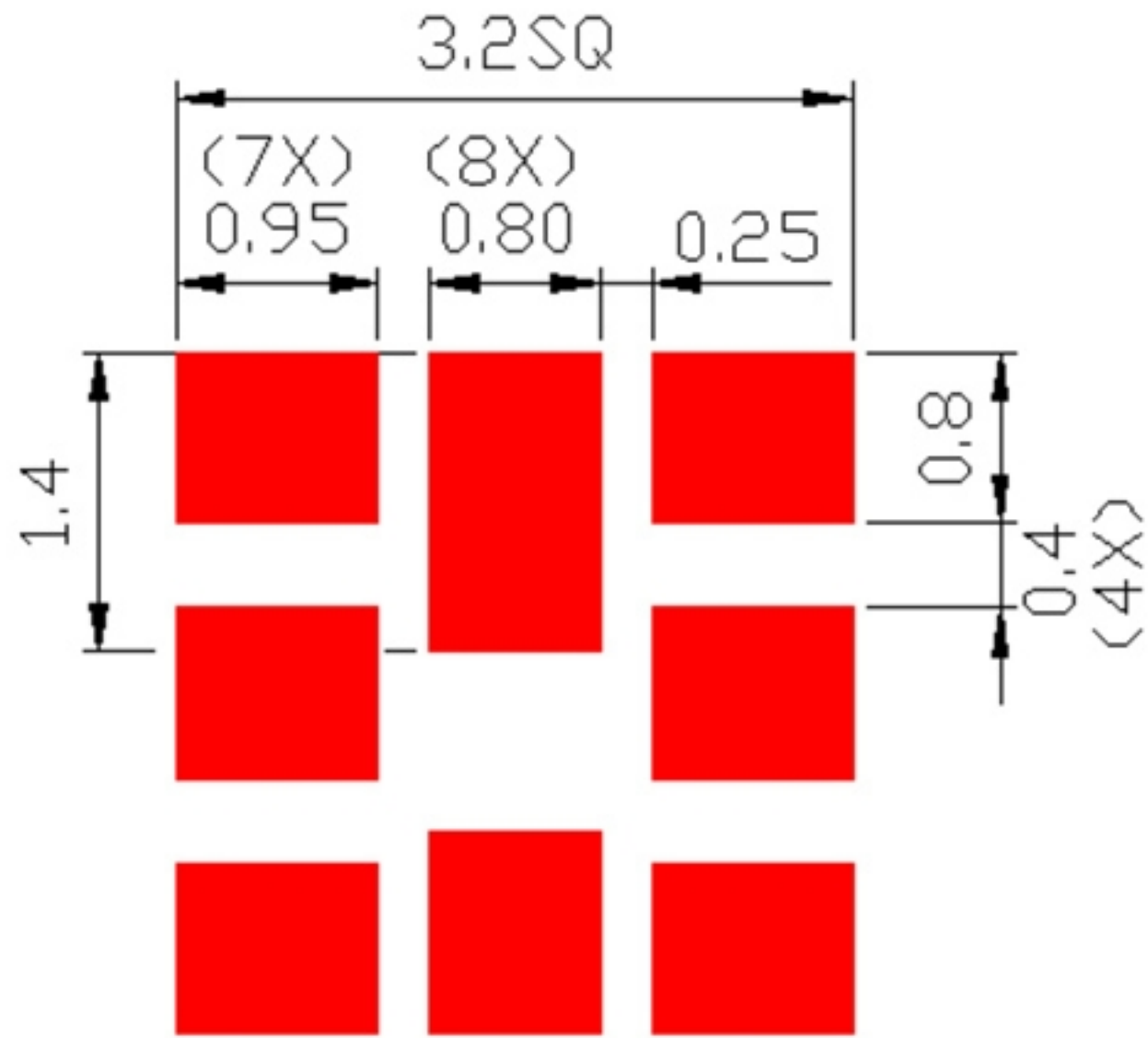
Span 3000 MHz



Span 200 MHz



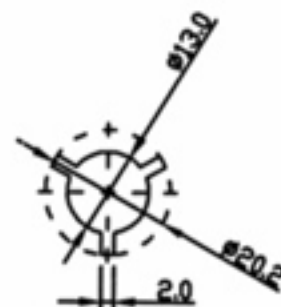
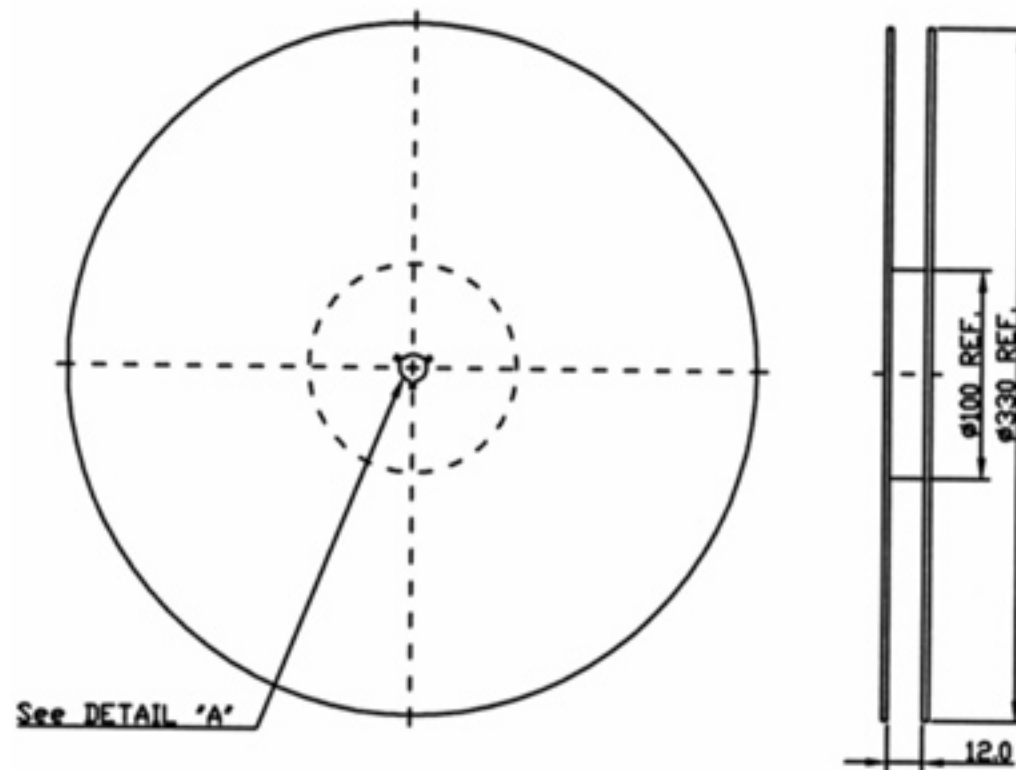
F. PCB FOOTPRINT:



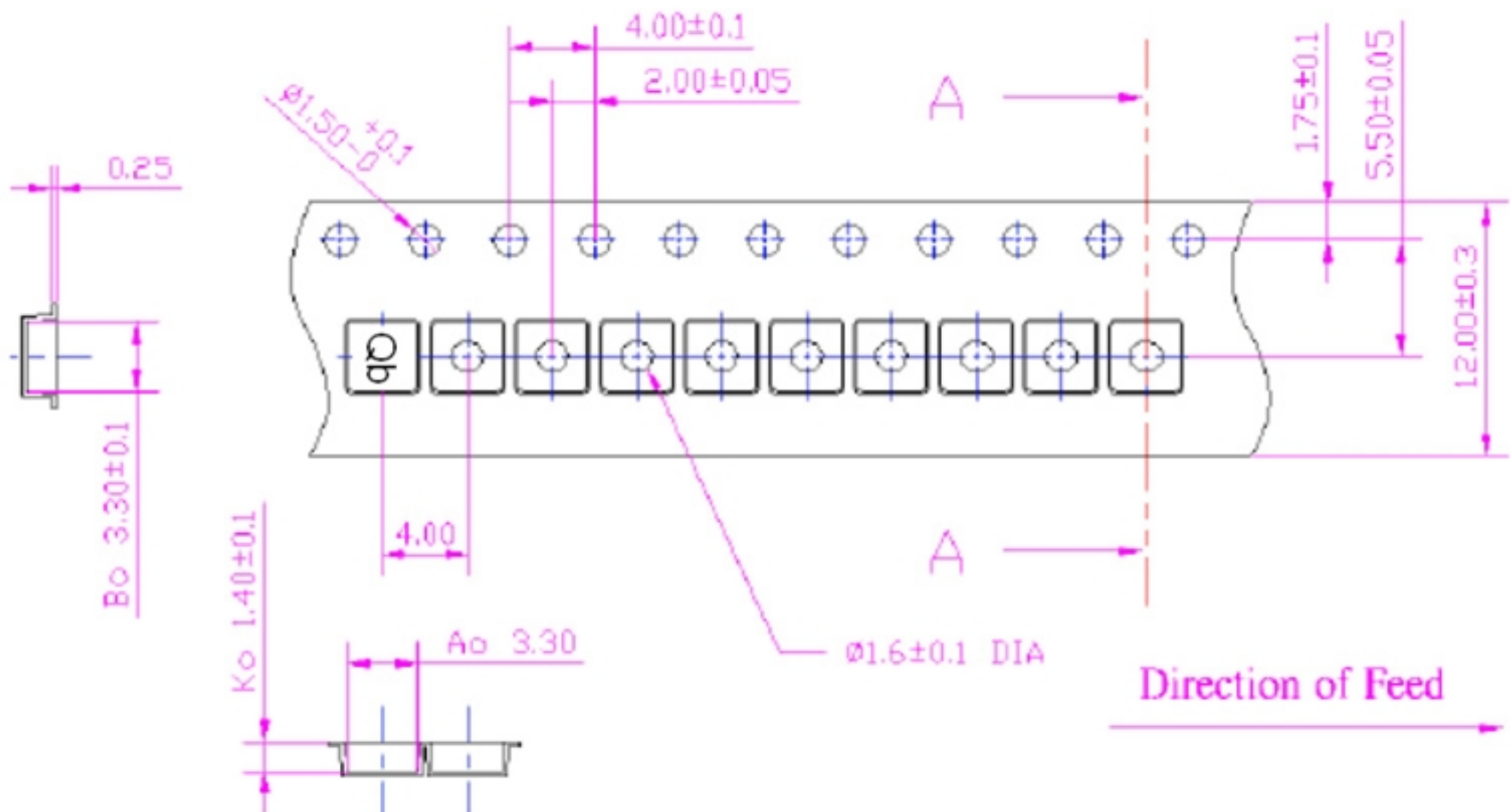
G. PACKING:

1. REEL DIMENSION

(Please refer to FR-75D10 for packing quantity)



2. TAPE DIMENSION



H. RECOMMENDED REFLOW PROFILE :

1. Preheating shall be fixed at $150 \sim 180^{\circ}\text{C}$ for $60 \sim 90$ seconds.
2. Ascending time to preheating temperature 150°C shall be 30 seconds min.
3. Heating shall be fixed at 220°C for $50 \sim 80$ seconds and at $260^{\circ}\text{C} +0/-5^{\circ}\text{C}$ peak ($20 \sim 40$ sec).
4. Time: 2 times.

