

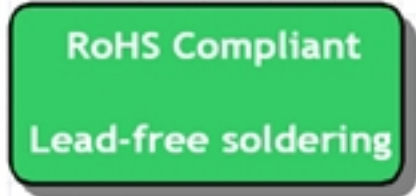
SAW Filter 1960 MHz 60MHz BW Band 2 SMD 1.1x0.9 mm

MODEL NO.:TA1870DA

REV.1.0

A. MAXIMUM RATING:

1. Operating temperature range: -30 °C to +85 °C
2. Storage temperature range: -40 °C to +85 °C
3. Maximum Input Power: +10 dBm
4. Maximum DC Voltage: +/-0 V
5. Moisture Sensitivity Level: Level 3



Electrostatic Sensitive Device (ESD)

B. ELECTRICAL CHARACTERISTICS:

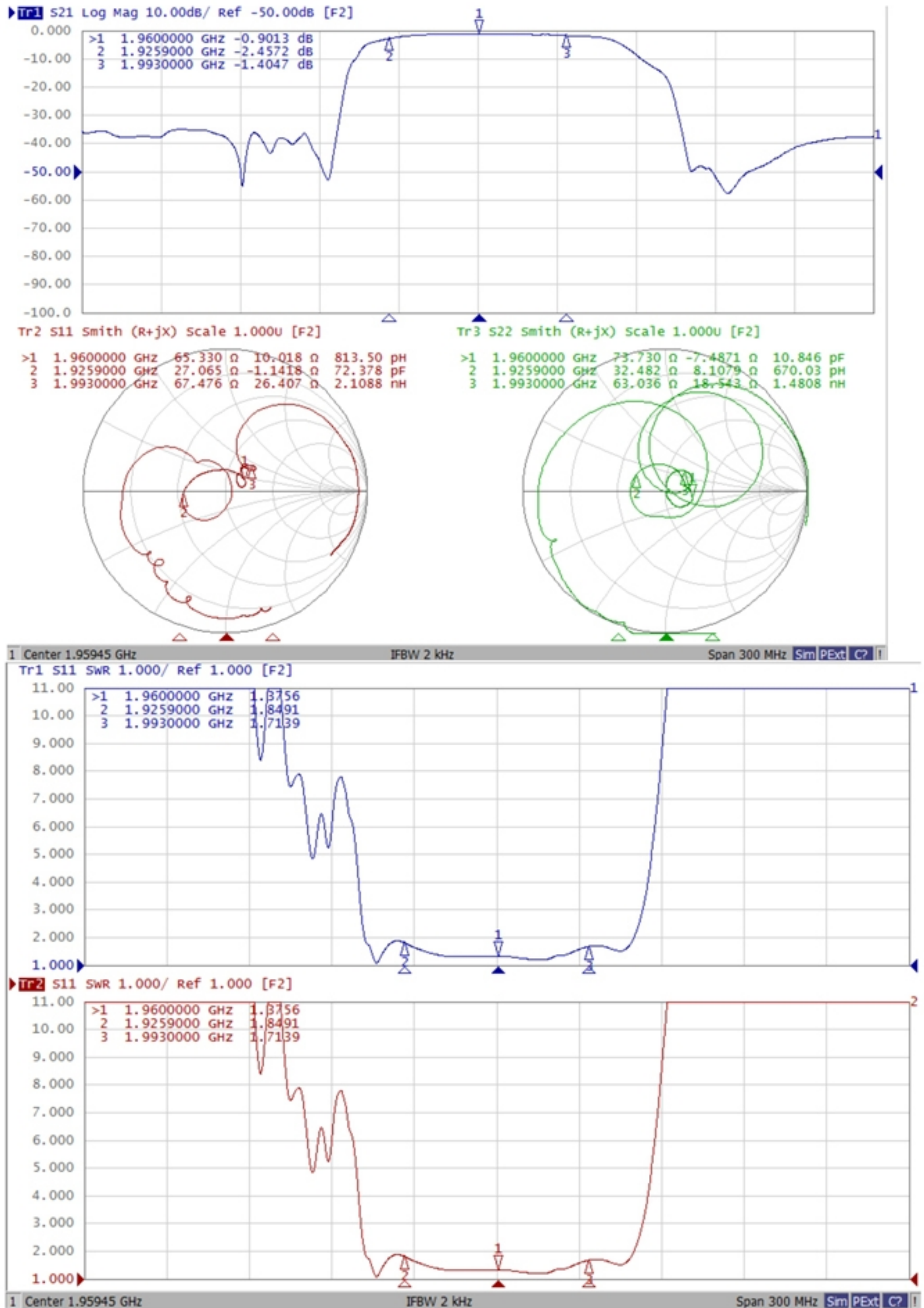
Terminating source impedance: $Z_s = 50 \Omega$ (Single-ended)

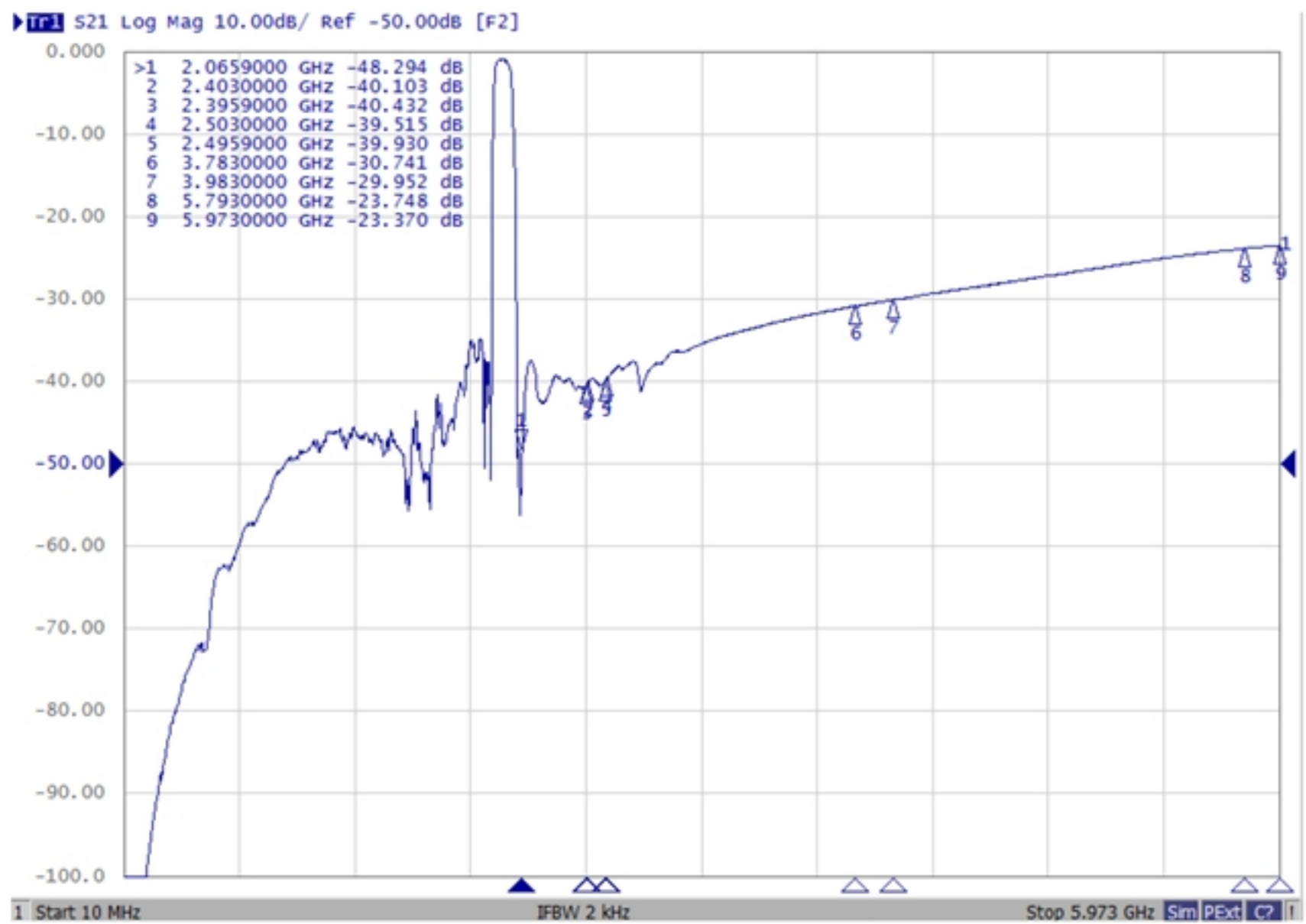
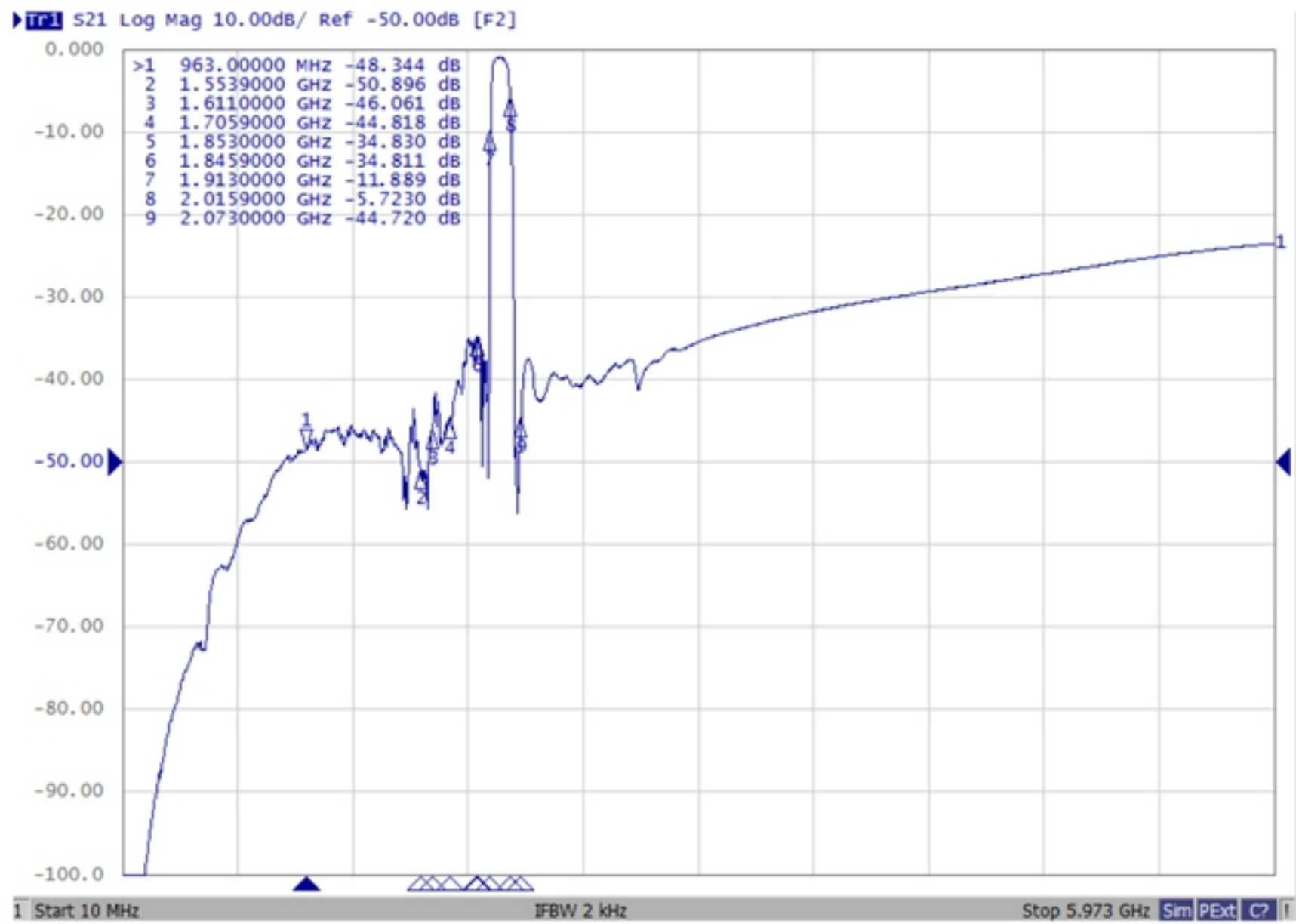
Terminating load impedance: $Z_L = 50\Omega$ (Single-ended)

Parameters Description		Unit	Minimum	Typical	Maximum
Center Frequency		MHz	-	1960	-
Insertion Loss	1930~1990 MHz	dB	-	2.9	4.0
Amplitude ripple	1930~1990 MHz	dBp-p	-	1.7	2.7
VSWR	1930~1990 MHz	-	-	1.8	2.3
Attenuation:					
DC~960 MHz		dB	40	48	-
1558~1608 MHz		dB	40	48	-
1710~1850 MHz		dB	33	38	-
1850~1910MHz		dB	10	12	-
2020~2070MHz		dB	3	5.5	-
2070~2400 MHz		dB	30	38	-
2400~2500 MHz		dB	35	42	-
2500~3780 MHz		dB	25	36	-
3780~3980 MHz		dB	25	35	-
3980~5790 MHz		dB	15	28	-
5790~5970 MHz		dB	15	28	-

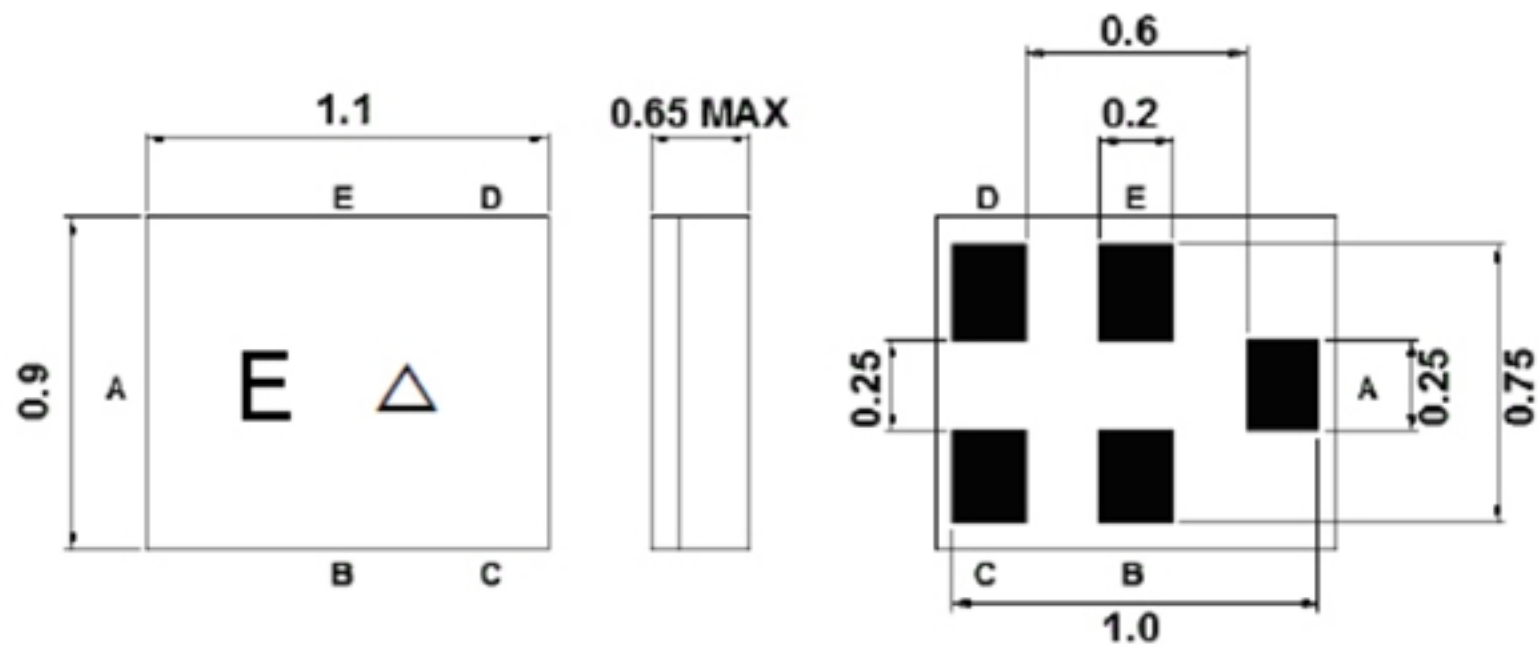
Notes : (1) With Matching Network .

C. FREQUENCY CHARACTERISTIC:





D.OUTLINE DRAWING:



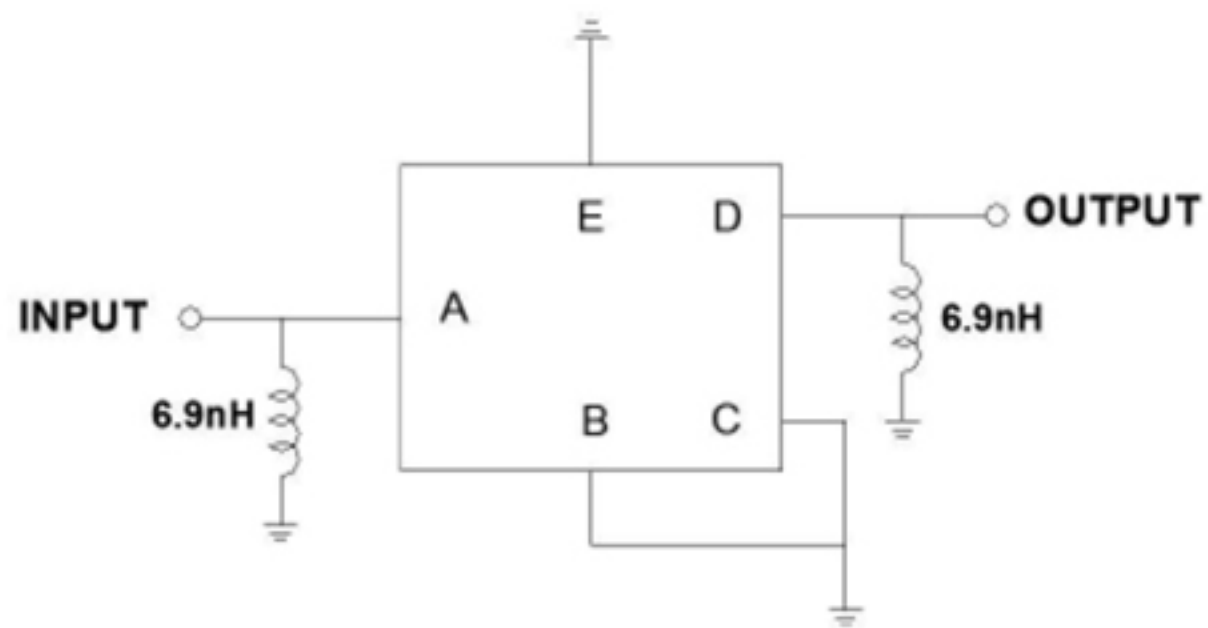
Marking Descriptions	
E	Fixed Code
△	Date Code(Year+Month)

Pin Description	
B, C, E	Ground
A	Input
D	Output

Date Code (year+month)

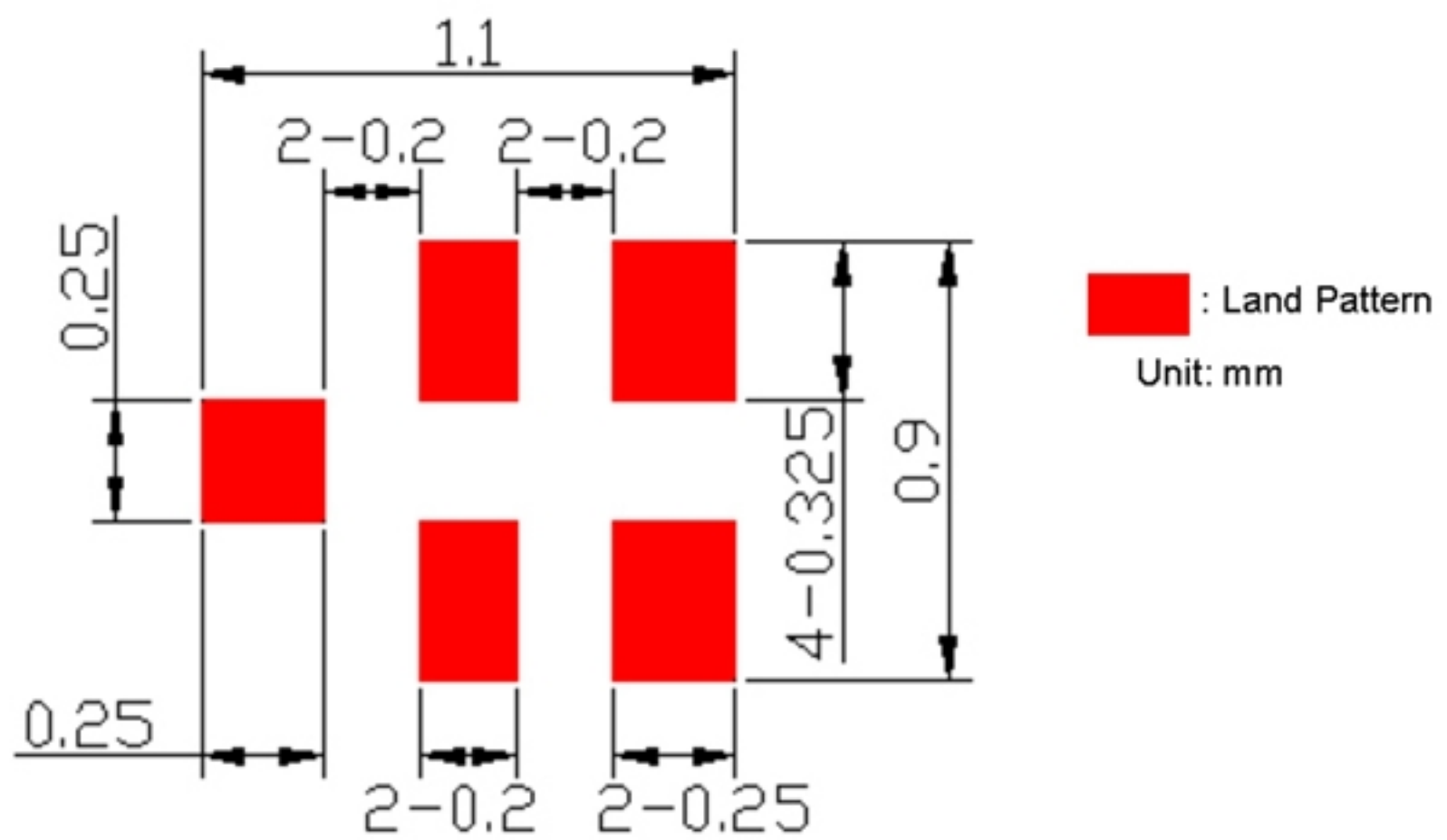
Year	Jan.	Feb.	Mar.	Apr.	May.	Jun.	Jul.	Aug.	Sep.	Oct.	Nov.	Dec.
2013	A	B	C	D	E	F	G	H	J	K	L	M
2014	N	P	Q	R	S	T	U	V	W	X	Y	Z
2015	a	b	c	d	e	f	g	h	j	k	l	m
2016	n	p	q	r	s	t	u	v	w	x	y	z
2017	<u>A</u>	<u>B</u>	<u>C</u>	<u>D</u>	<u>E</u>	<u>F</u>	<u>G</u>	<u>H</u>	<u>J</u>	<u>K</u>	<u>L</u>	<u>M</u>
2018	<u>N</u>	<u>P</u>	<u>Q</u>	<u>R</u>	<u>S</u>	<u>T</u>	<u>U</u>	<u>V</u>	<u>W</u>	<u>X</u>	<u>Y</u>	<u>Z</u>
2019	<u>a</u>	<u>b</u>	<u>c</u>	<u>d</u>	<u>e</u>	<u>f</u>	<u>g</u>	<u>h</u>	<u>i</u>	<u>k</u>	<u>l</u>	<u>m</u>
2020	<u>n</u>	<u>p</u>	<u>q</u>	<u>r</u>	<u>s</u>	<u>t</u>	<u>u</u>	<u>v</u>	<u>w</u>	<u>x</u>	<u>y</u>	<u>z</u>

E. MEASUREMENT CIRCUIT:



Source & Load Impedance: 50Ω

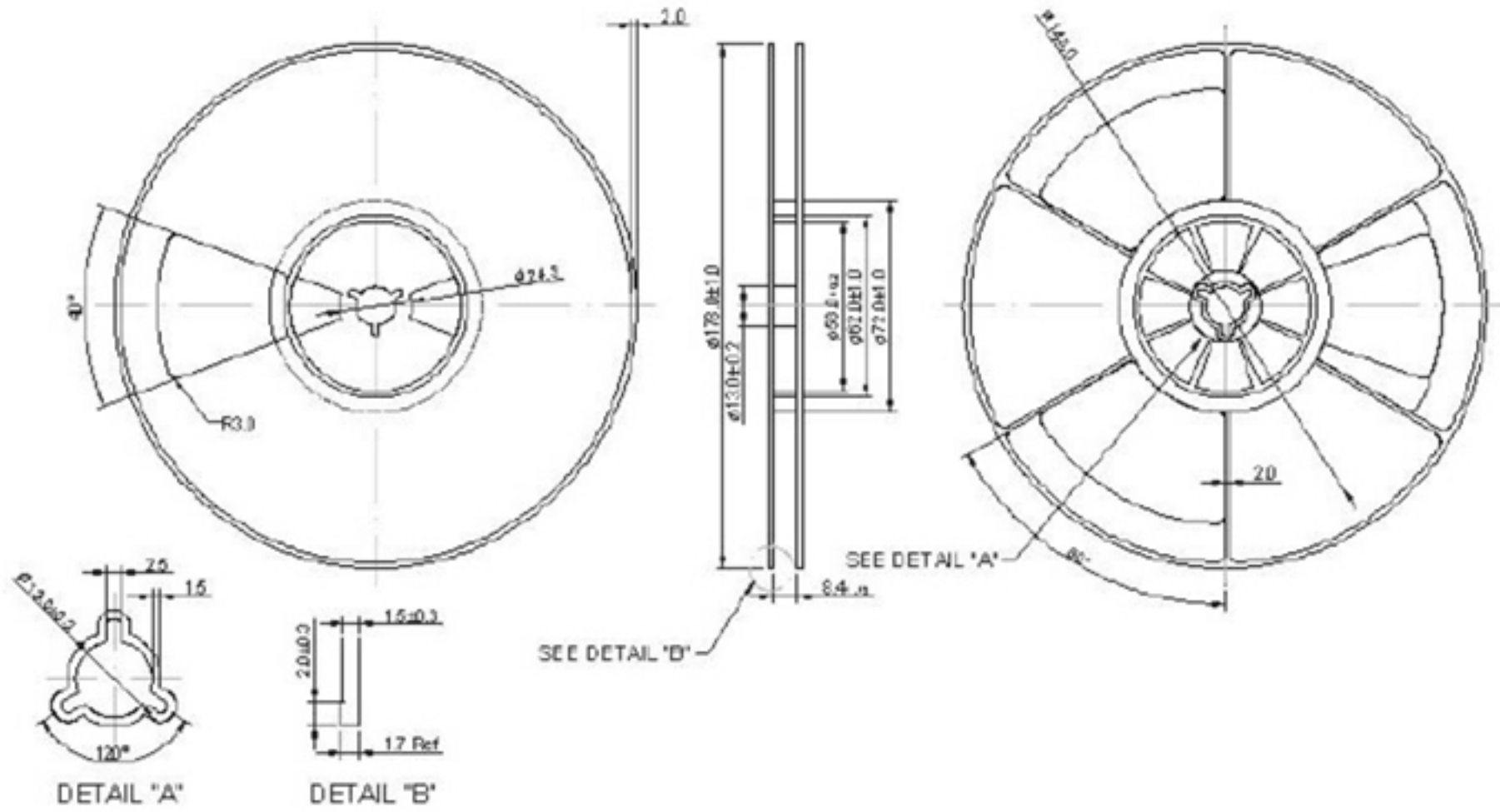
F. PCB FOOTPRINT:



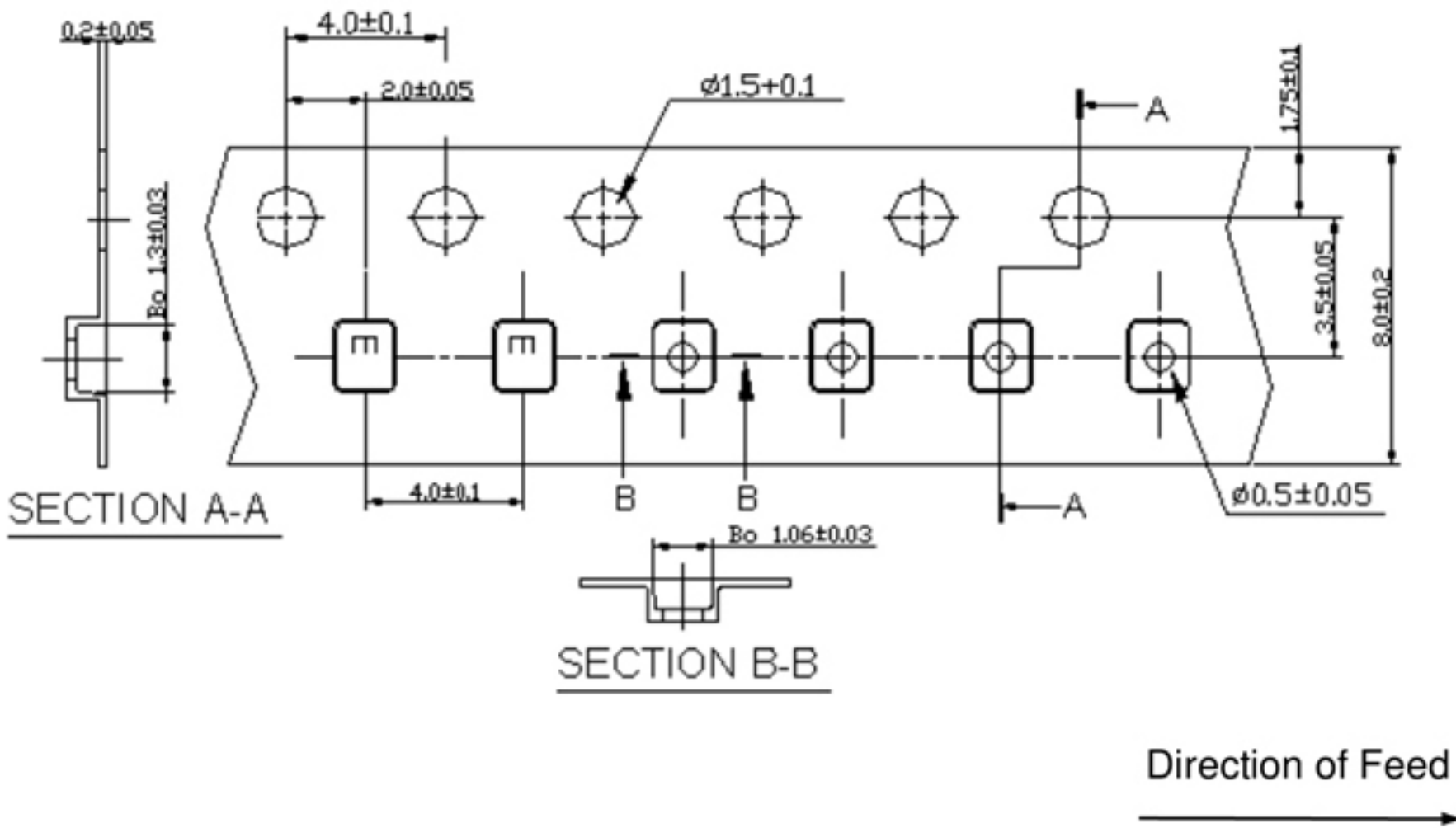
G. PACKING:

1. REEL DIMENSION

(Please refer to FR-75D10 for packing quantity)



2. TAPE DIMENSION



H. RECOMMENDED REFLOW PROFILE:

1. Preheating shall be fixed at 150~180°C for 60~90 seconds.
2. Ascending time to preheating temperature 150°C shall be 30 seconds min.
3. Heating shall be fixed at 220°C for 50~80 seconds and at 260°C +0/-5°C peak (20~40sec).
4. Time: 2 times.

